

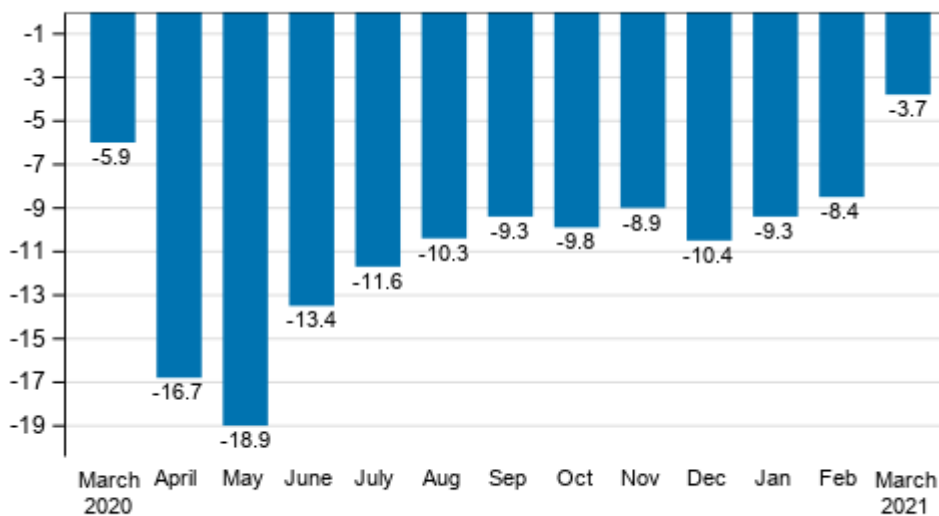
# Turnover in service industries

2021, March

## Preliminary data: Turnover in services fell in March

According to Statistics Finland's preliminary data, the working day adjusted turnover in service industries fell by 3.7 per cent in March 2021 compared with March 2020. Services are here examined exclusive of trade.

### Annual change in working day adjusted turnover of service industries, %

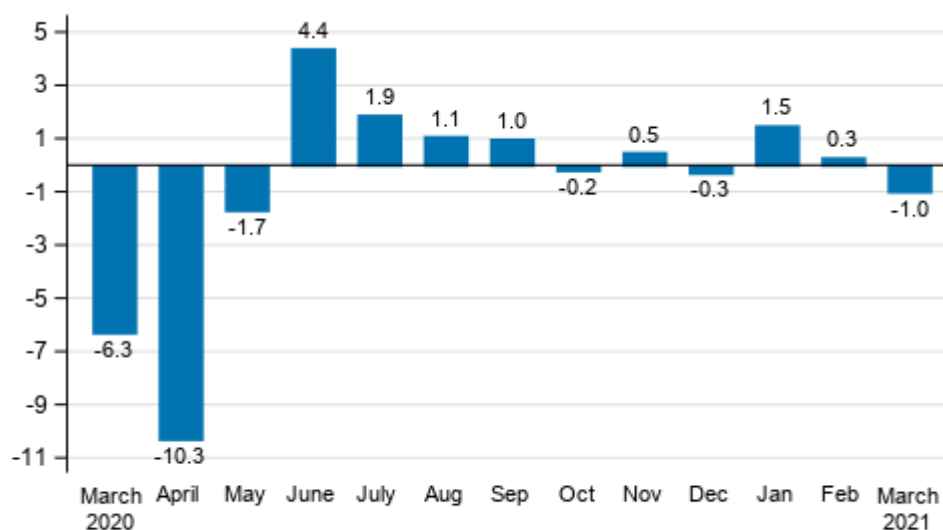


Source: Statistics Finland

## Turnover contracted compared with the previous month

According to the preliminary data the seasonally adjusted turnover in service industries contracted in March 2021 by 1.0 per cent compared to February. In February, seasonally adjusted turnover grew by 0.3 per cent, while in January, turnover was 1.5 per cent higher than in the month before.

**Change in seasonally adjusted turnover from the previous month of service industries, %**



Source: Statistics Finland

The data for the latest month are preliminary and are released at a delay of around four weeks. The data may become significantly revised in coming months.

The factors caused by the variation in the number of weekdays are taken into account in adjustment for working days. This means taking into consideration the lengths of months, different weekdays and holidays. In addition, seasonal variation is eliminated from seasonally adjusted series, on account of which it makes sense to compare observations of two successive months as well.

# Contents

## Tables

### Appendix tables

Appendix table 1. Annual change in working day adjusted turnover in services.....	4
---	---

## Figures

### Appendix figures

Appendix figure 1. Turnover of service industries, trend series.....	5
--	---

# Appendix tables

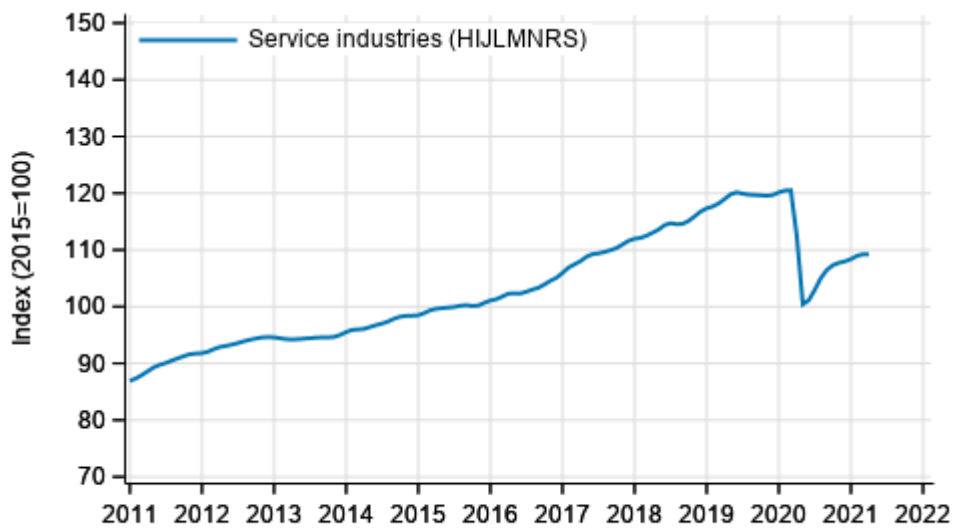
**Appendix table 1. Annual change in working day adjusted turnover in services**

Year-on-year change by three-month period, % <sup>1)</sup>				Year-on-year change in the latest month, % <sup>1)</sup>
04-06/2020	07-09/2020	10-12/2020	01-03/2021	03/2021
-16.3	-10.4	-9.8	-7.1	-3.7

1) Year-on-year change compares the value for an examined time period to the value for the corresponding time period twelve months back.

# Appendix figures

Appendix figure 1. Turnover of service industries, trend series



Source: Statistics Finland

## Inquiries

Aki Niskanen                   029 551 2657  
Katja Liukkonen           029 551 3515  
Head of Department in  
charge:  
Katri Kaaja

[palvelut.suhdanne@stat.fi](mailto:palvelut.suhdanne@stat.fi)  
[www.stat.fi](http://www.stat.fi)

Source: Turnover of service industries, Statistics Finland