

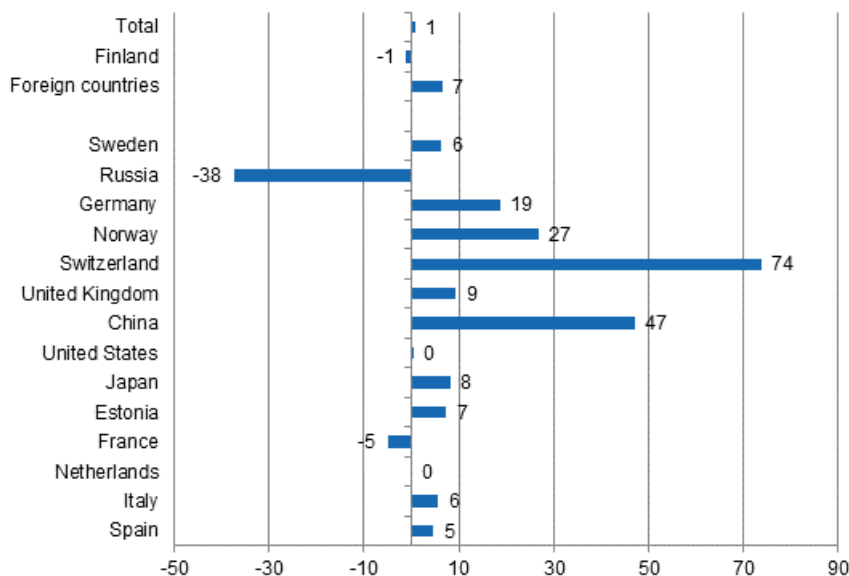
# Accommodation statistics

2015, July

## Nights spent by foreign tourists in Finland up by 6.5 per cent in July

The number of recorded nights spent by foreign tourists at Finnish accommodation establishments in July 2015 was 760,000, which was 6.5 per cent higher than in July 2014. By contrast, overnight stays by domestic tourists decreased by one per cent and accommodation establishments recorded nearly 2.2 million of them. In July 2015, the total number of nights spent at accommodation establishments was almost 3.0 million, which was 0.7 per cent higher than in July 2014. These figures are preliminary data from Statistics Finland's statistics on accommodation establishments and they have been collected from accommodation establishments with at least 20 beds or caravan pitches with electricity connection.

### Change in overnight stays in July 2015/2014, %



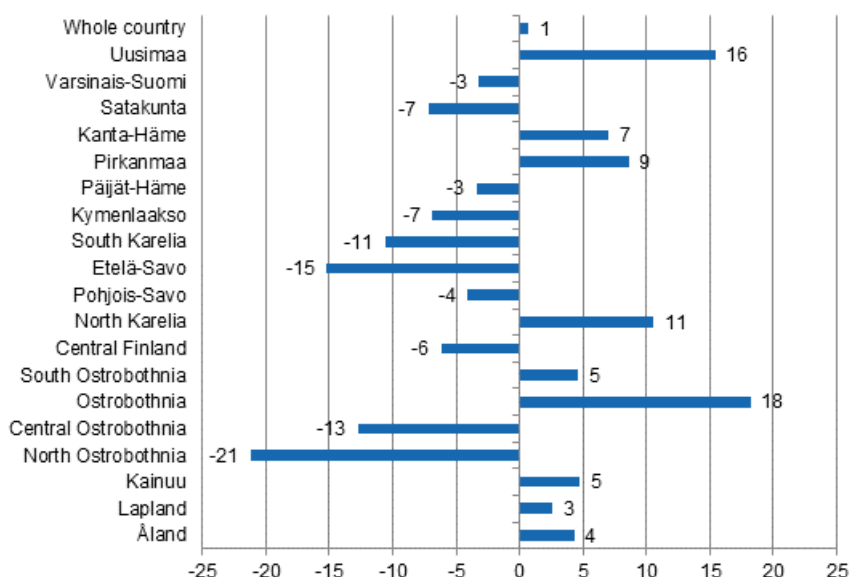
Large international events increased the number of overnight stays by foreign visitors in July 2015. Except for Russia and France, nights spent by visitors from all the most important countries of inbound tourism to Finland increased or remained on level with the previous year. Overnight stays by Swiss tourists increased

most, by as much as 74 per cent, which made them the fifth largest country of inbound tourism with close on 44,000 overnight stays. However, Swedish tourists were the largest group of foreign visitors with good 125,000 nights spent. The number was 6.2 per cent higher than last year. Russian tourists came next with 91,000 overnight stays, even though 37.5 per cent fewer nights were recorded for them than one year earlier. Germans came third with close on 89,000 nights spent and they had 18.8 per cent more overnight stays at accommodation establishments than in July 2014.

Strong growth was also recorded for Norwegian tourists, 27 per cent, and they spent nearly 46,000 nights at Finnish accommodation establishments. Overnight stays by Chinese tourists have increased throughout the current year. and in July 2015 the growth amounted to 47.2 per cent. The number of nights spent by them rose to 27,600.

By region, the total number of overnight stays increased in July most in Ostrobothnia, up by 18.2 per cent. In Uusimaa, overnight stays went up by 15.5 per cent and in North Karelia by 10.6 per cent. The biggest decreases in overnight stays were recorded in North Ostrobothnia, 21.2 per cent, and in Etelä-Savo, 15.2 per cent. In the whole country, overnight stays increased by 0.7 per cent from July 2014.

### Change in overnight stays in July by region 2015 / 2014, %



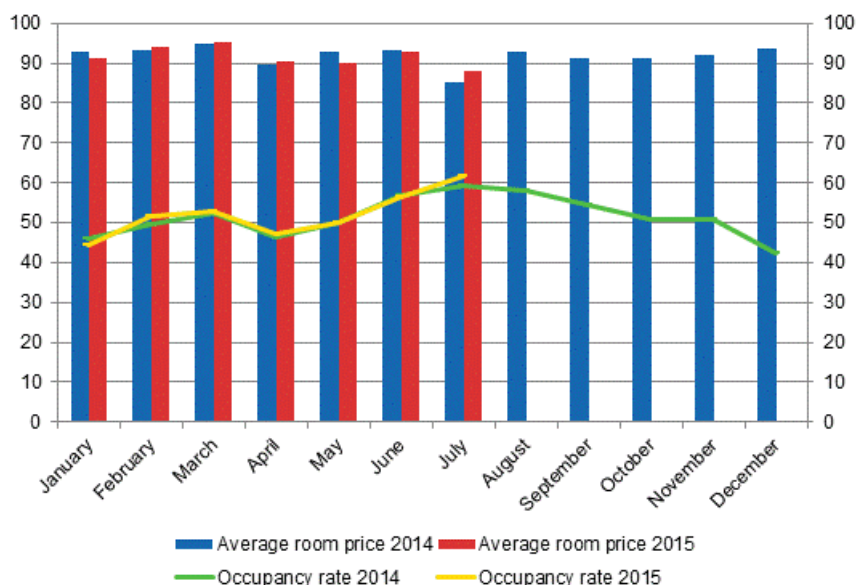
### Overnight stays in hotels increased by 4.7 per cent in July

In July 2015, the total number of nights spent in hotels was close on 2 million, which was 4.7 per cent higher than twelve months earlier. Overnight stays by resident tourists increased by 3.2 per cent and hotels recorded 1.4 million of them. Overnight stays by foreign tourists increased by 9.1 per cent and hotels recorded a total of good 546,000 of them in July 2015.

The occupancy rate of hotel rooms in the whole country was 61.7 per cent in July. One year earlier, it was 59.1 per cent. Among the regions, the highest occupancy rate of hotel rooms was measured in Åland, 80.1 per cent. An occupancy rate of over 70 per cent was reached in Varsinais-Suomi, 73.3 per cent, in Uusimaa, 70.4 per cent, and in Pirkanmaa, where 70.1 per cent of hotel rooms were in use. In Mariehamn, the hotel room occupancy rose to 90.5 per cent. The hotel room occupancy rate in Helsinki was 77.8 per cent.

In July, the realised average price of a hotel room was EUR 88.06 per day for the whole country. Twelve months previously, it was EUR 85.25.

### Hotel room occupancy rate and the monthly average price



### Total number of nights spent at all accommodation establishments fell by 1.5 per cent in January to July

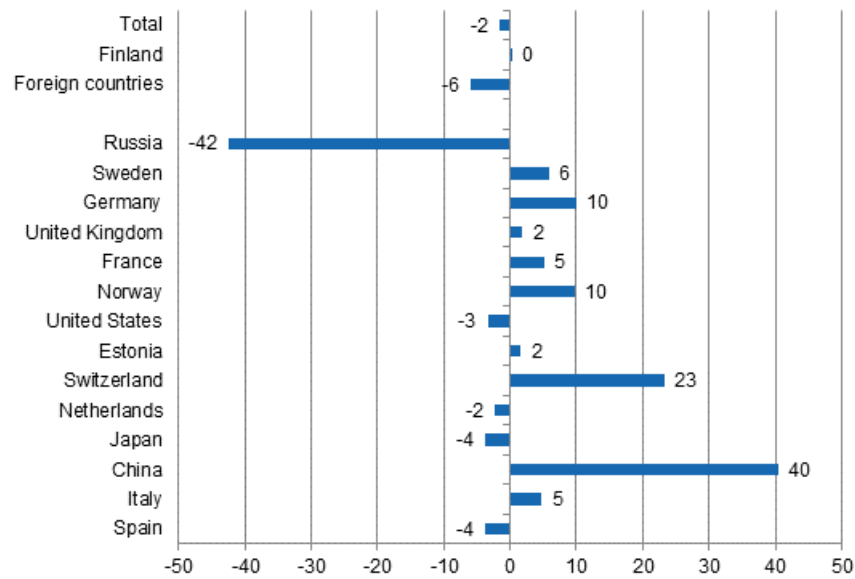
Between January and July 2015, the number of nights spent at accommodation establishments in Finland totalled around 12 million. This was 1.5 per cent lower than in the corresponding period one year earlier. The number of nights spent by resident tourists remained on level with the previous year, while that of nights spent by foreign tourists decreased by 5.9 per cent. In total, 8.7 million overnight stays were recorded for resident tourists and close on 3.3 million overnight stays were recorded for non-resident tourists.

Between January and July 2015, the number of nights spent by Russian visitors at accommodation establishments in Finland totalled close on 513,000 million, which was 42.4 per cent down on the respective time period of last year. They were still, by far, the largest group of foreign visitors in January to July, while Swedish visitors came next with 348,000 overnight stays. Overnight stays of Swedes went up by 5.8 per cent. Good 342,000 overnight stays were recorded for German visitors and 222,000 for British tourists. The overnight stays of visitors from Germany increased by 10.1 per cent and those of visitors from Great Britain by 1.8 per cent from the previous year's corresponding time period.

Overnight stays by French visitors amounted to 148,000 in January to July, which was 5.1 per cent more than in the corresponding period one year ago. Accommodation establishments recorded nearly 124,000 overnight stays for Norwegian tourists and 118,000 overnight stays for tourists from the United States. Overnight stays by Norwegian tourists increased by 9.8 per cent, while those by tourists from the United States decreased by 3.4 per cent from the corresponding period in 2014. Both Swiss and Estonian tourists spent over 110,000 nights in Finland and in January to July, overnight stays by Swiss visitors increased by 23.2 per cent while those by Estonian visitors only grew by 1.6 per cent.

Among the most important countries of inbound tourism to Finland, overnight stays by Chinese visitors increased most, or by 40.4 per cent, during the January to July period. The number of nights spent by them rose to 98,000.

**Change in overnight stays in January-July 2015/2014, %**



# Contents

## Tables

### Appendix tables

Appendix table 1.1. Capacity and its utilization, July 2015.....	6
Appendix table 1.2. Capacity and its utilization, January-July 2015.....	7
Appendix table 2.1. Nights spend in all establishments, July 2015.....	8
Appendix table 2.2. Nights spend in all establishments, January-July 2015.....	9
Appendix table 3.1. Hotel capacity and capacity utilization, July 2015.....	10
Appendix table 3.2. Hotel capacity and capacity utilization, January-July 2015.....	11
Appendix table 4.1. Nights spend in hotels, July 2015.....	12
Appendix table 4.2. Nights spend in hotels, January-July 2015.....	13
Appendix table 5.1. Visitor arrivals and nights spend by country of residence, July 2015.....	14
Appendix table 5.2. Visitor arrivals and nights spend by country of residence, January-July 2015.....	14
Appendix table 6. Nights spend in all establishments, 2015.....	15

# Appendix tables

**Appendix table 1.1. Capacity and its utilization, July 2015**

Region	Number of establishments	Number of bedrooms	Occupancy rate of bedrooms, %	Change of the occupancy rate compared to previous year, %-units	Average price of nights spend, in euros (incl. VAT 10 %)
Whole country	1,367	66,293	57.5	1.8	37.47
Mainland Finland	1,293	64,582	57.2	1.8	37.68
Uusimaa	151	15,295	69.2	5.6	43.75
Varsinais-Suomi	91	4,046	67.1	0.3	40.70
Satakunta	47	1,695	54.9	-0.7	39.14
Kanta-Häme	35	1,773	38.1	0.6	40.42
Pirkanmaa	80	4,719	65.8	7.6	40.65
Päijät-Häme	42	2,148	42.3	-3.2	31.57
Kymenlaakso	34	1,301	48.0	-3.8	28.09
South Karelia	44	2,166	60.0	-8.7	34.79
Etelä-Savo	103	3,352	58.4	1.2	41.29
Pohjois-Savo	59	2,903	57.9	-1.1	35.71
North Karelia	62	1,834	58.8	3.0	39.76
Central Finland	65	3,668	57.2	-1.7	38.96
South Ostrobothnia	53	2,070	61.3	1.6	35.54
Ostrobothnia	41	1,588	55.7	1.9	22.86
Central Ostrobothnia	21	701	45.7	-1.4	32.58
North Ostrobothnia	113	4,729	52.8	0.5	34.03
Kainuu	53	2,365	56.2	6.0	35.47
Lapland	199	8,229	35.5	-0.4	26.88
Åland	74	1,711	70.6	3.3	<sup>1)</sup> ..

1) [...] Data too uncertain for presentation.

**Appendix table 1.2. Capacity and its utilization, January-July 2015**

Region	Number of establishments	Number of bedrooms	Occupancy rate of bedrooms, %	Change of the occupancy rate compared to previous year, %-units	Average price of nights spend, in euros (incl. VAT 10 %)
Whole country	1,178	60,816	48.3	0.2	49.65
Mainland Finland	1,129	59,566	48.5	0.2	49.77
Uusimaa	145	15,005	60.8	0.5	62.24
Varsinais-Suomi	72	3,723	49.8	0.6	48.75
Satakunta	42	1,521	40.6	1.8	50.69
Kanta-Häme	33	1,596	33.8	-0.6	45.31
Pirkanmaa	72	4,455	49.6	2.3	49.95
Päijät-Häme	38	2,007	38.1	-4.8	42.85
Kymenlaakso	31	1,189	38.0	-2.6	41.13
South Karelia	38	1,858	44.6	-5.8	43.44
Etelä-Savo	88	2,552	37.9	-1.7	40.43
Pohjois-Savo	53	2,670	46.7	-0.2	45.23
North Karelia	51	1,546	44.8	0.9	48.06
Central Finland	52	3,147	47.7	-0.1	45.26
South Ostrobothnia	47	1,797	44.7	2.9	39.56
Ostrobothnia	33	1,428	46.2	0.7	42.61
Central Ostrobothnia	16	583	39.2	-3.9	49.35
North Ostrobothnia	100	4,460	47.4	1.8	42.38
Kainuu	46	2,241	43.8	1.7	33.87
Lapland	171	7,790	41.9	-0.7	44.80
Åland	48	1,250	38.9	2.9	1) ..

1) [...] Data too uncertain for presentation.

**Appendix table 2.1. Nights spend in all establishments, July 2015**

Region	Nights spend, total	Change of nights spend, total, %	Nights spend, residents	Change of nights spend, residents, %	Nights spend, non-residents	Change of nights spend, non-residents, %
Whole country	2,956,021	0.7	2,195,646	-1.1	760,375	6.5
Mainland Finland	2,822,577	0.5	2,148,487	-1.2	674,090	6.7
Uusimaa	662,074	15.5	344,912	10.0	317,162	22.0
Varsinais-Suomi	212,186	-3.2	179,404	-2.6	32,782	-6.3
Satakunta	88,553	-7.2	82,140	-7.8	6,413	0.7
Kanta-Häme	51,346	7.0	46,845	10.2	4,501	-17.7
Pirkanmaa	220,777	8.6	189,904	7.8	30,873	14.1
Päijät-Häme	65,809	-3.4	51,702	-5.4	14,107	4.8
Kymenlaakso	58,285	-6.9	44,888	-6.9	13,397	-6.9
South Karelia	94,827	-10.6	67,995	10.4	26,832	-39.7
Etelä-Savo	151,306	-15.2	124,282	-12.5	27,024	-25.8
Pohjois-Savo	124,267	-4.1	107,762	-3.8	16,505	-6.0
North Karelia	93,117	10.6	76,362	5.2	16,755	44.3
Central Finland	149,391	-6.2	128,205	-5.1	21,186	-12.6
South Ostrobothnia	149,888	4.6	146,931	5.0	2,957	-10.1
Ostrobothnia	98,679	18.2	78,442	10.8	20,237	60.0
Central Ostrobothnia	27,076	-12.7	24,213	-13.4	2,863	-7.3
North Ostrobothnia	216,416	-21.2	182,861	-24.0	33,555	-1.9
Kainuu	126,086	4.7	116,852	4.9	9,234	2.2
Lapland	232,494	2.6	154,787	1.1	77,707	5.7
Åland	133,444	4.3	47,159	3.6	86,285	4.7



**Appendix table 2.2. Nights spend in all establishments, January-July 2015**

Region	Nights spend, total	Change of nights spend, total, %	Nights spend, residents	Change of nights spend, residents, %	Nights spend, non-residents	Change of nights spend, non-residents, %
Whole country	11,968,429	-1.5	8,716,005	0.2	3,252,424	-5.9
Mainland Finland	11,687,092	-1.7	8,600,460	0.1	3,086,632	-6.4
Uusimaa	3,068,474	3.7	1,694,239	6.0	1,374,235	1.1
Varsinais-Suomi	719,548	-1.5	588,123	-0.8	131,425	-4.4
Satakunta	244,321	-3.1	208,511	-4.2	35,810	4.5
Kanta-Häme	210,223	-6.0	188,905	-5.9	21,318	-6.9
Pirkanmaa	866,577	3.9	747,857	5.6	118,720	-5.7
Päijät-Häme	321,306	-9.9	269,657	-8.8	51,649	-15.2
Kymenlaakso	198,820	-4.8	147,110	1.6	51,710	-19.3
South Karelia	359,260	-13.7	242,745	14.9	116,515	-43.2
Etelä-Savo	430,995	-11.0	347,531	-5.1	83,464	-29.3
Pohjois-Savo	505,182	-2.3	440,001	0.2	65,181	-16.0
North Karelia	299,031	-1.6	239,580	0.8	59,451	-10.4
Central Finland	634,278	-7.6	550,412	-6.0	83,866	-16.8
South Ostrobothnia	440,912	4.2	426,755	4.6	14,157	-8.4
Ostrobothnia	283,481	10.6	229,529	9.5	53,952	15.8
Central Ostrobothnia	89,425	-15.7	80,942	-14.6	8,483	-24.6
North Ostrobothnia	974,367	-6.9	809,570	-7.3	164,797	-5.1
Kainuu	610,434	-0.3	563,867	2.1	46,567	-22.7
Lapland	1,430,458	-2.8	825,126	-3.3	605,332	-2.2
Åland	281,337	7.7	115,545	9.2	165,792	6.6

**Appendix table 3.1. Hotel capacity and capacity utilization, July 2015**

Region / municipality	Number of establishments	Number of bedrooms	Occupancy rate of bedrooms, %	Change compared to previous year, %-units	Room price, euros (incl. VAT 10 %)	<sup>1)</sup> RevPAR, euros (incl. VAT 10 %)
Whole country	636	52,345	61.7	2.5	88.06	54.32
Mainland Finland	618	51,411	61.3	2.5	87.93	53.94
Uusimaa	111	14,482	70.4	6.5	88.26	62.16
Espoo	11	1,145	55.2	2.7	65.17	35.99
Helsinki	53	8,925	77.8	8.2	91.52	71.17
Vantaa	11	2,237	68.5	11.8	84.22	57.70
Varsinais-Suomi	41	3,030	73.3	-0.3	95.16	69.76
Turku	18	2,021	78.3	-1.6	98.55	77.17
Satakunta	27	1,275	56.4	-0.5	107.19	60.43
Pori	10	674	66.2	-0.5	121.05	80.19
Kanta-Häme	18	1,352	45.1	0.5	74.34	33.56
Hämeenlinna	8	671	53.4	10.8	83.31	44.52
Pirkanmaa	41	3,780	70.1	8.6	93.07	65.28
Tampere	24	2,872	73.5	9.8	93.86	68.96
Päijät-Häme	15	1,763	44.0	-2.9	78.64	34.60
Lahti	6	639	44.7	5.2	77.13	34.45
Kymenlaakso	18	975	49.9	-2.9	85.03	42.40
Kouvola	7	444	46.8	-6.7	82.14	38.45
South Karelia	19	1,574	63.7	-9.6	88.62	56.49
Lappeenranta	9	888	74.9	-9.5	80.13	60.04
Etelä-Savo	37	2,260	63.1	5.1	104.62	66.02
Mikkeli	9	630	66.0	5.4	88.31	58.33
Pohjois-Savo	31	2,401	58.9	-1.3	85.06	50.07
Kuopio	16	1,423	64.6	-1.9	89.39	57.73
North Karelia	22	1,273	65.6	4.8	94.23	61.80
Joensuu	7	672	67.8	8.5	95.45	64.69
Central Finland	31	2,920	62.0	-5.0	88.97	55.14
Jyväskylä	13	1,580	62.4	-5.9	97.72	60.94
South Ostrobothnia	23	1,573	69.4	1.3	89.23	61.92
Seinäjoki	7	605	71.0	-1.1	98.65	70.07
Ostrobothnia	22	1,248	60.5	-0.7	87.67	53.03
Vaasa	8	810	69.5	0.5	89.05	61.88
Central Ostrobothnia	9	517	47.7	-5.2	81.44	38.83
Kokkola	5	400	53.3	-4.3	79.30	42.25
North Ostrobothnia	49	3,380	57.8	2.6	83.85	48.43
Kuusamo	10	756	35.3	-5.2	64.52	22.77
Oulu	11	1,442	78.0	10.0	87.13	67.94
Kainuu	20	1,766	61.3	6.9	81.74	50.08
Kajaani	6	409	55.6	5.9	73.95	41.08
Sotkamo	6	1,099	66.1	7.4	83.96	55.49
Lapland	84	5,842	37.8	1.2	67.21	25.41
Rovaniemi	12	1,213	51.1	2.8	64.36	32.91
Åland	18	934	80.1	1.5	..	..
Maarianhamina	8	570	90.5	-1.0	..	..

1) RevPar = Average accommodation sales revenue per available room. Calculation formula: RevPar = Average room price \* Occupancy rate.[...] Data too uncertain for presentation.

**Appendix table 3.2. Hotel capacity and capacity utilization, January-July 2015**

Region / municipality	Number of establishments	Number of bedrooms	Occupancy rate of bedrooms, %	Change compared to previous year, %-units	Room price, euros (incl. VAT 10 %)	<sup>1)</sup> RevPAR, euros (incl. VAT 10 %)
Whole country	614	50,802	52.1	0.6	91.65	47.73
Mainland Finland	601	50,042	52.2	0.6	91.63	47.79
Uusimaa	113	14,407	61.7	0.8	98.73	60.95
Espoo	12	1,222	52.9	0.5	82.14	43.48
Helsinki	52	8,601	66.2	0.6	103.56	68.57
Vantaa	11	2,236	68.9	1.1	96.86	66.69
Varsinais-Suomi	38	2,973	54.3	0.5	87.30	47.43
Turku	19	2,035	57.1	-0.0	89.35	51.06
Satakunta	25	1,168	46.2	2.8	87.94	40.66
Pori	9	649	48.9	3.3	90.76	44.37
Kanta-Häme	18	1,333	38.0	-0.4	75.36	28.63
Hämeenlinna	8	702	37.4	1.6	86.52	32.34
Pirkanmaa	41	3,770	52.4	2.8	93.77	49.13
Tampere	25	2,947	55.4	1.6	95.12	52.67
Päijät-Häme	15	1,752	40.4	-4.8	81.77	33.04
Lahti	6	643	45.6	0.4	86.40	39.41
Kymenlaakso	16	922	40.8	-0.9	86.78	35.38
Kouvola	6	434	39.9	-0.6	81.56	32.58
South Karelia	17	1,402	48.0	-7.6	90.83	43.59
Lappeenranta	8	789	58.1	-4.2	82.31	47.84
Etelä-Savo	30	1,732	42.5	-0.2	82.04	34.88
Mikkeli	8	574	47.9	0.6	81.37	38.99
Pohjois-Savo	31	2,345	48.3	0.0	86.36	41.73
Kuopio	16	1,416	54.1	0.5	91.50	49.50
North Karelia	22	1,217	49.3	0.9	90.25	44.45
Joensuu	7	627	59.7	1.9	90.79	54.25
Central Finland	28	2,706	50.9	-0.5	86.44	44.03
Jyväskylä	12	1,433	53.2	-0.9	90.09	47.90
South Ostrobothnia	22	1,468	50.7	2.4	78.57	39.82
Seinäjoki	6	568	55.1	3.2	86.77	47.78
Ostrobothnia	22	1,243	49.8	1.2	88.08	43.83
Vaasa	8	803	57.1	1.5	90.29	51.59
Central Ostrobothnia	9	489	41.5	-4.4	83.88	34.81
Kokkola	5	372	46.4	-6.2	85.38	39.61
North Ostrobothnia	48	3,399	52.5	3.6	85.23	44.78
Kuusamo	10	762	40.7	0.5	93.33	38.02
Oulu	12	1,519	65.0	5.6	88.45	57.46
Kainuu	20	1,765	47.6	0.9	73.73	35.07
Kajaani	6	409	39.5	2.6	77.67	30.67
Sotkamo	6	1,101	55.1	0.3	72.82	40.10
Lapland	85	5,950	46.4	0.2	95.62	44.35
Rovaniemi	12	1,251	57.8	-0.3	88.20	50.97
Åland	14	760	46.3	4.1	..	..
Maarianhamina	6	464	59.2	5.0	..	..

1) RevPar = Average accommodation sales revenue per available room. Calculation formula: RevPar = Average room price \* Occupancy rate.[...] Data too uncertain for presentation.

**Appendix table 4.1. Nights spend in hotels, July 2015**

Region / municipality	Nights spend, total	Change of nights spend, total, %	Nights spend, residents	Change of nights spend, residents, %	Nights spend, non-residents	Change of nights spend, non-residents, %
Whole country	1,977,666	4.7	1,431,523	3.2	546,143	9.1
Mainland Finland	1,925,447	4.6	1,408,463	3.0	516,984	9.1
Uusimaa	587,455	16.4	294,974	11.9	292,481	21.3
Espoo	37,066	7.9	20,373	3.8	16,693	13.5
Helsinki	404,906	18.6	173,281	11.0	231,625	25.1
Vantaa	84,072	21.1	51,058	24.8	33,014	15.8
Varsinais-Suomi	140,561	-4.1	117,649	-3.8	22,912	-5.6
Turku	100,002	-5.9	84,649	-4.9	15,353	-10.7
Satakunta	41,533	-0.0	37,125	-1.1	4,408	10.6
Pori	26,567	-6.0	24,616	-5.7	1,951	-9.1
Kanta-Häme	35,389	2.4	31,791	6.0	3,598	-21.1
Hämeenlinna	20,693	7.2	19,008	16.8	1,685	-44.5
Pirkanmaa	159,585	10.3	137,339	8.4	22,246	23.1
Tampere	120,333	10.9	100,512	7.4	19,821	32.8
Päijät-Häme	45,455	0.2	35,176	-1.2	10,279	5.1
Lahti	14,459	3.4	11,337	3.9	3,122	1.6
Kymenlaakso	27,336	-9.2	22,893	-5.4	4,443	-25.0
Kouvola	12,801	-16.4	11,259	-8.2	1,542	-49.5
South Karelia	67,606	-7.7	47,874	11.4	19,732	-34.9
Lappeenranta	43,438	0.3	35,148	10.5	8,290	-28.1
Etelä-Savo	82,811	-0.1	69,958	2.5	12,853	-12.1
Mikkeli	25,387	6.4	20,563	12.9	4,824	-14.8
Pohjois-Savo	87,224	-1.0	77,496	-0.7	9,728	-3.6
Kuopio	56,506	-1.9	51,207	0.7	5,299	-21.6
North Karelia	51,031	6.6	45,894	10.4	5,137	-18.3
Joensuu	24,514	15.2	22,581	22.1	1,933	-30.6
Central Finland	116,970	-9.5	98,403	-9.0	18,567	-11.8
Jyväskylä	53,991	-11.5	44,079	-14.8	9,912	6.4
South Ostrobothnia	83,460	3.1	81,421	3.5	2,039	-8.7
Seinäjoki	25,869	1.1	25,249	3.0	620	-42.5
Ostrobothnia	48,241	-0.9	39,387	-2.7	8,854	7.7
Vaasa	38,175	-1.8	30,743	-4.2	7,432	9.9
Central Ostrobothnia	13,995	-13.1	12,752	-11.8	1,243	-24.4
Kokkola	11,879	-7.2	10,864	-6.9	1,015	-10.3
North Ostrobothnia	115,034	-6.6	94,778	-9.1	20,256	7.2
Kuusamo	19,153	-16.1	17,648	-16.1	1,505	-15.4
Oulu	64,044	1.7	49,809	4.1	14,235	-6.2
Kainuu	85,729	10.7	81,358	11.2	4,371	2.5
Kajaani	12,266	13.8	11,166	15.4	1,100	0.5
Sotkamo	66,103	9.6	64,074	10.8	2,029	-17.5
Lapland	136,032	7.9	82,195	6.0	53,837	10.9
Rovaniemi	36,557	11.9	18,937	14.0	17,620	9.9
Åland	52,219	10.8	23,060	14.5	29,159	8.1
Maarianhamina	33,862	20.5	17,637	13.9	16,225	28.6

**Appendix table 4.2. Nights spend in hotels, January-July 2015**

Region / municipality	Nights spend, total	Change of nights spend, total, %	Nights spend, residents	Change of nights spend, residents, %	Nights spend, non-residents	Change of nights spend, non-residents, %
Whole country	9,361,024	-0.0	6,688,981	2.5	2,672,043	-6.0
Mainland Finland	9,219,767	-0.2	6,622,221	2.4	2,597,546	-6.4
Uusimaa	2,845,962	3.8	1,558,833	7.0	1,287,129	0.1
Espoo	204,779	5.2	128,486	18.0	76,293	-11.0
Helsinki	1,824,056	3.4	854,765	4.2	969,291	2.8
Vantaa	493,350	3.8	310,958	11.2	182,392	-6.8
Varsinais-Suomi	564,918	-1.1	461,395	-0.2	103,523	-4.7
Turku	398,815	-1.7	325,875	-0.4	72,940	-7.2
Satakunta	163,549	-1.0	132,131	-3.1	31,418	9.2
Pori	99,927	2.8	84,983	1.1	14,944	13.5
Kanta-Häme	178,339	-0.1	158,740	0.1	19,599	-1.8
Hämeenlinna	93,990	-0.7	84,360	2.7	9,630	-23.0
Pirkanmaa	700,100	5.3	600,838	7.2	99,262	-4.9
Tampere	551,334	7.5	459,545	9.5	91,789	-1.5
Päijät-Häme	253,972	-9.8	212,934	-8.6	41,038	-15.4
Lahti	89,766	-7.9	66,488	-8.4	23,278	-6.5
Kymenlaakso	116,031	-12.1	86,368	-4.7	29,663	-28.4
Kouvola	56,046	-8.5	46,008	-1.7	10,038	-30.4
South Karelia	279,038	-15.8	188,172	16.0	90,866	-46.2
Lappeenranta	180,797	-7.2	138,128	16.7	42,669	-44.1
Etelä-Savo	264,704	-3.7	228,540	0.5	36,164	-24.1
Mikkeli	96,246	-1.0	79,475	5.9	16,771	-24.4
Pohjois-Savo	417,158	0.3	370,705	2.4	46,453	-14.0
Kuopio	282,164	2.8	251,599	6.0	30,565	-17.7
North Karelia	215,769	-0.0	177,317	6.0	38,452	-20.8
Joensuu	114,622	2.0	91,244	9.9	23,378	-20.3
Central Finland	530,790	-6.7	453,971	-4.6	76,819	-17.5
Jyväskylä	248,891	-3.9	211,478	-2.9	37,413	-9.3
South Ostrobothnia	300,436	2.3	289,430	2.6	11,006	-6.0
Seinäjoki	100,090	1.3	93,470	1.0	6,620	6.3
Ostrobothnia	196,630	3.2	156,374	3.5	40,256	1.8
Vaasa	148,425	0.9	114,482	0.0	33,943	3.9
Central Ostrobothnia	63,234	-12.4	57,990	-10.8	5,244	-26.8
Kokkola	52,273	-11.8	47,847	-9.9	4,426	-27.8
North Ostrobothnia	650,274	0.5	532,113	1.2	118,161	-2.2
Kuusamo	155,155	-1.7	122,435	4.2	32,720	-19.1
Oulu	329,823	3.9	274,342	6.9	55,481	-8.9
Kainuu	450,243	1.4	419,937	4.4	30,306	-26.9
Kajaani	51,053	3.3	45,669	3.5	5,384	1.5
Sotkamo	374,783	1.7	355,727	5.1	19,056	-36.6
Lapland	1,028,620	-2.0	536,433	-1.6	492,187	-2.4
Rovaniemi	256,764	6.3	111,417	15.2	145,347	0.4
Åland	141,257	11.9	66,760	13.0	74,497	10.9
Maarianhamina	102,080	19.3	53,418	15.7	48,662	23.6

**Appendix table 5.1. Visitor arrivals and nights spend by country of residence, July 2015**

Country of residence	Visitor arrivals in all accommodation establishments	Nights spend in all accommodation establishments	Change of nights spend in all accommodation establishments, %	Nights spend in hotels	Change of nights spend in hotels, %
Total	1,660,678	2,956,021	0.7	1,977,666	4.7
Finland	1,283,893	2,195,646	-1.1	1,431,523	3.2
Foreign countries	376,785	760,375	6.5	546,143	9.1
Sweden	58,528	125,478	6.2	68,025	11.0
Germany	49,474	88,784	18.8	63,544	25.6
Russia	40,072	91,171	-37.5	63,091	-35.8
United Kingdom	13,786	29,995	9.4	26,140	13.0
United States	12,290	26,512	0.2	25,064	-0.2
Norway	19,836	45,831	27.0	23,282	24.1
Netherlands	9,617	17,795	0.0	11,040	0.2
Italy	7,179	14,038	5.5	11,774	9.3
France	9,396	18,217	-5.0	13,158	-5.1
Japan	11,879	22,599	8.2	21,979	8.5
Estonia	10,454	21,751	7.2	12,818	10.5
Switzerland	21,686	43,910	74.0	32,279	85.9
Spain	6,344	11,636	4.5	10,066	11.1
China	21,571	27,633	47.2	26,820	48.2

**Appendix table 5.2. Visitor arrivals and nights spend by country of residence, January-July 2015**

Country of residence	Visitor arrivals in all accommodation establishments	Nights spend in all accommodation establishments	Change of nights spend in all accommodation establishments, %	Nights spend in hotels	Change of nights spend in hotels, %
Total	6,411,551	11,968,429	-1.5	9,361,024	-0.0
Finland	4,887,391	8,716,005	0.2	6,688,981	2.5
Foreign countries	1,524,160	3,252,424	-5.9	2,672,043	-6.0
Sweden	190,174	348,341	5.8	259,852	7.1
Germany	166,128	342,334	10.1	283,009	11.2
Russia	223,629	512,845	-42.4	376,557	-44.1
United Kingdom	90,356	221,939	1.8	192,070	1.6
United States	54,741	118,026	-3.4	113,655	-3.2
Norway	59,299	123,737	9.8	88,479	3.1
Netherlands	46,865	107,073	-2.3	83,890	-0.9
Italy	30,030	63,152	4.8	56,461	6.5
France	55,400	148,250	5.1	131,094	5.6
Japan	56,322	103,105	-3.7	100,240	-3.2
Estonia	47,566	112,695	1.6	78,132	-2.0
Switzerland	48,085	111,039	23.2	80,652	22.2
Spain	23,985	51,876	-3.8	46,855	-0.1
China	64,713	98,041	40.4	95,255	42.0

**Appendix table 6. Nights spend in all establishments, 2015**

Month	Nights spend, total	Change of nights spend, total, %	Nights spend, residents	Change of nights spend, residents, %	Nights spend, non-residents	Change of nights spend, non-residents, %
Total	11,968,429	-1.5	8,716,005	0.2	3,252,424	-5.9
January	1,276,018	-7.9	788,153	2.9	487,865	-21.2
February	1,449,835	1.8	1,055,425	3.3	394,410	-2.1
March	1,574,771	-3.1	1,162,285	-0.4	412,486	-9.8
April	1,344,578	-0.4	1,055,792	0.8	288,786	-4.6
May	1,345,747	-0.4	959,312	0.9	386,435	-3.3
June	2,021,459	-2.8	1,499,392	-1.4	522,067	-6.6
July	2,956,021	0.7	2,195,646	-1.1	760,375	6.5

### Inquiries

Marjut Tuominen 029 551 3356

Kari Keränen 029 551 3208

Director in charge:

Mari Ylä-Jarkko

[liikenne.matkailu@stat.fi](mailto:liikenne.matkailu@stat.fi)

[www.stat.fi](http://www.stat.fi)

Source: Accommodation Statistics. Statistics Finland