

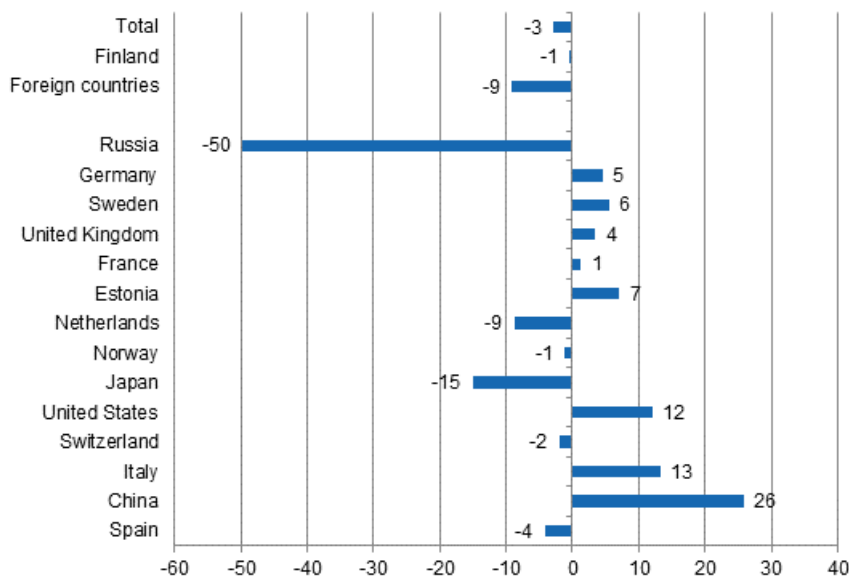
Accommodation statistics

2015, March

Nights spent by foreign tourists in Finland down by 9.2 per cent in March

The number of recorded nights spent by foreign tourists at Finnish accommodation establishments in March 2015 was 415,000, which was 9.2 per cent lower than one year earlier. Overnight stays by resident tourists also decreased by 0.5 per cent and totalled nearly 1.2 million. In March 2015, the total number of nights spent at all accommodation establishments was almost 1.6 million, which was 2.9 per cent lower than in March 2014. These figures are preliminary data from Statistics Finland's statistics on accommodation establishments and they have been collected from accommodation establishments with at least 20 beds or caravan pitches with electricity connection, and youth hostels.

Change in overnight stays in March 2015/2014, %



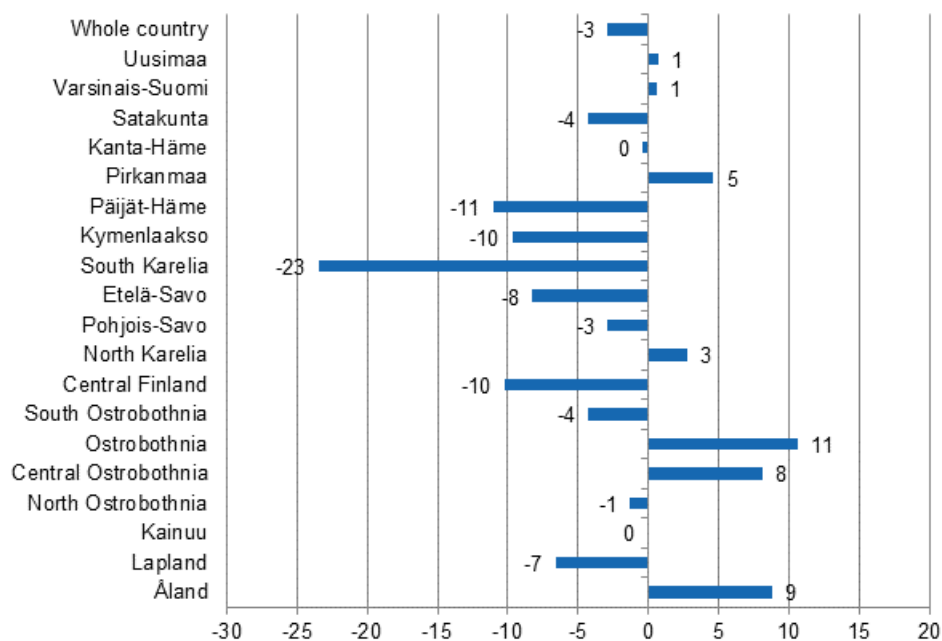
The steep decline in overnight stays by Russian visitors continued in March 2015. Altogether, 55,000 overnight stays were recorded for them at Finnish accommodation establishments, which was 49.7 per cent lower than in March 2014. Russians did, however, grab the top spot as the largest group of foreign

tourists again in March, leaving Germans in the second position. Nearly 47,000 nights spent were recorded for German visitors, which was 4.5 per cent more than twelve months earlier. Swedish tourists came third with 32,000 overnight stays at accommodation establishments, which was 5.5 per cent more than in March 2014. British visitors came next with good 31,000 overnight stays. The growth from last year amounted to 3.5 per cent.

Overnight stays by French visitors increased slightly in March and Finnish accommodation establishments recorded nearly 28,000 overnight stays for them, which was 1.3 per cent more than one year before. Visitors from Norway, the Netherlands and Estonia spent between 17,000 and 18,000 nights each. Overnight stays by Norwegian tourists declined by 1.2 per cent and those by Dutch tourists by 8.8 per cent year-on-year, while overnight stays by Estonian tourists increased by seven per cent. Among the most important countries of inbound tourism to Finland, the biggest decrease, in addition to Russians, was recorded for Japanese tourists, who spent 15,000 nights at Finnish accommodation establishments. The number was 15.1 per cent lower than in March 2014.

By region, the total number of overnight stays increased in March most in Ostrobothnia, up by 10.6 per cent. The number of overnight stays grew by 8.8 per cent in Åland and by 8.1 per cent in Central Ostrobothnia. The biggest drop in overnight stays was recorded in South Karelia, 23.4 per cent. In Päijät-Häme, overnight stays decreased by 11 per cent, and in Kymenlaakso and Central Finland the decline amounted to ten per cent in each. In the whole country, overnight stays decreased by 2.9 per cent from March 2014.

Change in overnight stays in March by region 2015 / 2014, %



Nights spent in hotels decreased by 2.4 per cent in March

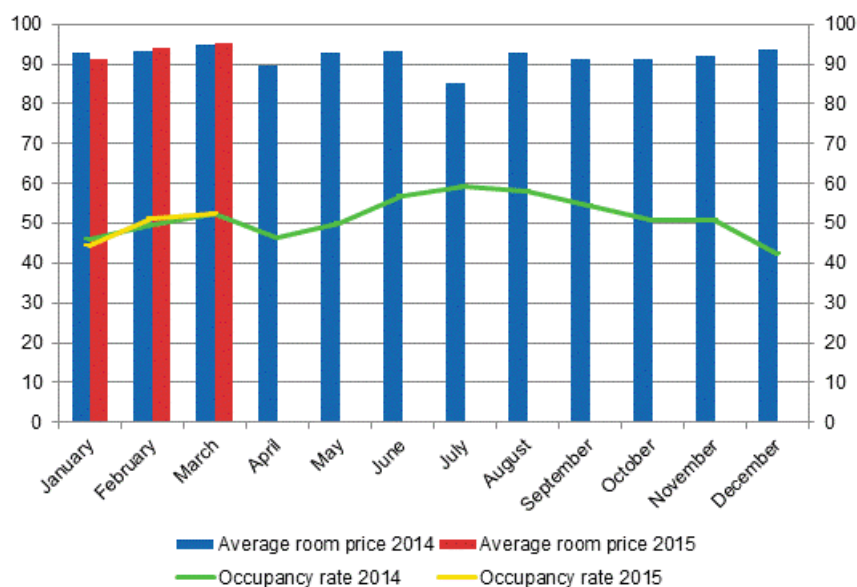
In March 2015, the total number of nights spent in hotels was good 1.3 million, which was 2.4 per cent lower than twelve months earlier. Overnight stays by resident tourists remained on level with March 2014 and hotels recorded nearly 955,000 of them. By contrast, the number of recorded nights spent by foreign tourists in hotels totalled close on 366,000, which was 8.6 per cent fewer than in March 2014.

The occupancy rate of hotel rooms in the whole country was 52.5 per cent in March. One year earlier, it was exactly the same. Among the regions, the highest occupancy rates of hotel rooms were measured in Lapland, 63.7 per cent, and North Karelia, 61.6 per cent. In Kittilä, the hotel room occupancy rate rose to

81.0 per cent and in Joensuu to 78.8 per cent. The hotel room occupancy rate in Helsinki was 62.5 per cent.

In March, the realised average price of a hotel room was EUR 95.31 per day for the whole country. Twelve months previously, it was EUR 94.96.

Hotel room occupancy rate and the monthly average price



Total number of nights spent at all accommodation establishments fell by 2.8 per cent in January to March

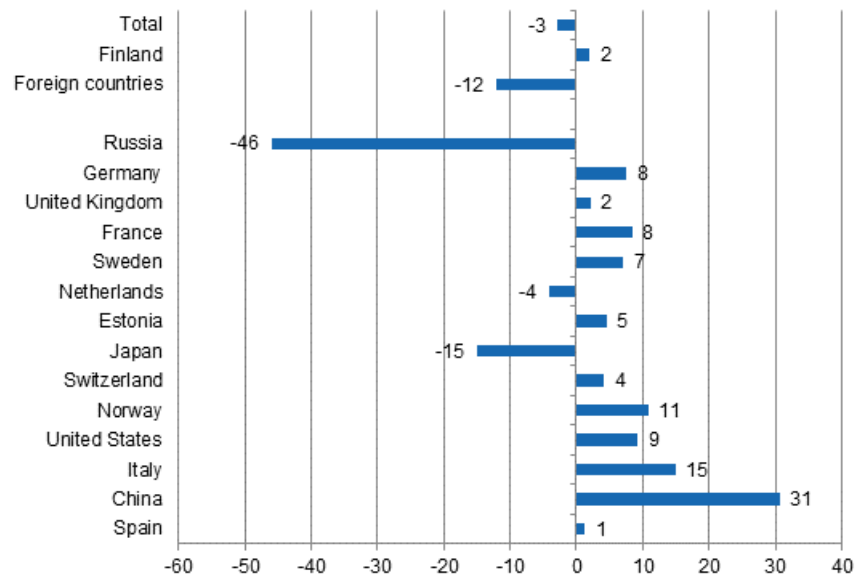
Between January and March 2015, the number of nights spent at accommodation establishments in Finland totalled 4.3 million. This was 2.8 per cent lower than one year earlier. The number of nights spent by resident tourists increased by 1.9 per cent while that of nights spent by foreign tourists decreased by 12.1 per cent. Nearly three million overnight stays were recorded for resident tourists and 1.3 million for non-resident tourists (at accommodation establishments).

March did not bring any change to the drop of overnight stays by Russian visitors. Between January and March, the number of nights spent by Russian visitors at accommodation establishments in Finland totalled good 266,000, which was 46 per cent down on the respective time period of last year. They were, however, by far, the largest group of foreign visitors in January to March, as German visitors came next with 121,500 overnight stays. Overnight stays of Germans went up by 7.6 per cent. British visitors came third with nearly 118,000 overnight stays. The number of nights recorded for them was 2.1 per cent higher than in the respective time period one year earlier.

Visitors from France spent nearly 96,000 nights at accommodation establishments. Their overnight stays increased by 8.4 per cent in January to March. Swedish visitors spent nearly 82,000 nights and Dutch visitors almost 57,000 nights at accommodation establishments. Overnight stays of Swedish visitors increased by 7.1 per cent whereas those of Dutch visitors decreased by 4.2 per cent from the corresponding period last year. Overnight stays by Japanese tourists decreased by 15.1 per cent just like in March, and good 45,000 overnight stays were recorded for them at Finnish accommodation establishments.

Among the most important countries of inbound tourism to Finland, overnight stays by Chinese visitors increased most, or by 30.8 per cent, during the January to March period. The number of nights spent by them rose to good 24,000, which despite the drop in overnight stays by Japanese visitors, partially contributed to the 5.9 per cent increase in overnight stays by Asians.

Change in overnight stays in January-March 2015/2014, %



Contents

Tables

Appendix tables

Appendix table 1.1. Capacity and its utilization, March 2015.....	6
Appendix table 1.2. Capacity and its utilization, January-March 2015.....	7
Appendix table 2.1. Nights spend in all establishments, March 2015.....	8
Appendix table 2.2. Nights spend in all establishments, January-March 2015.....	9
Appendix table 3.1. Hotel capacity and capacity utilization, March 2015.....	10
Appendix table 3.2. Hotel capacity and capacity utilization, January-March 2015.....	11
Appendix table 4.1. Nights spend in hotels, March 2015.....	12
Appendix table 4.2. Nights spend in hotels, January-March 2015.....	13
Appendix table 5.1. Visitor arrivals and nights spend by country of residence, March 2015.....	14
Appendix table 5.2. Visitor arrivals and nights spend by country of residence, January-March 2015.....	14
Appendix table 6. Nights spend in all establishments, 2015.....	15

Appendix tables

Appendix table 1.1. Capacity and its utilization, March 2015

Region	Number of establishments	Number of bedrooms	Occupancy rate of bedrooms, %	Change of the occupancy rate compared to previous year, %-units	Average price of nights spend, in euros (incl. VAT 10 %)
Whole country	1,089	58,645	49.7	0.0	57.35
Mainland Finland	1,061	57,717	50.2	0.1	57.36
Uusimaa	141	14,849	57.3	-0.3	71.72
Varsinais-Suomi	61	3,532	43.3	0.2	58.12
Satakunta	38	1,418	36.3	3.0	64.85
Kanta-Häme	31	1,529	31.4	-1.9	45.84
Pirkanmaa	70	4,402	46.8	0.8	58.28
Päijät-Häme	36	1,943	36.6	-1.2	56.23
Kymenlaakso	28	1,074	31.1	-3.4	57.51
South Karelia	34	1,667	40.8	-2.9	52.24
Etelä-Savo	81	2,257	31.0	-3.5	43.92
Pohjois-Savo	51	2,556	48.4	-0.3	50.71
North Karelia	47	1,432	56.9	7.8	61.98
Central Finland	46	2,930	47.2	-1.2	49.08
South Ostrobothnia	43	1,689	41.0	1.7	43.69
Ostrobothnia	29	1,291	51.0	6.8	62.90
Central Ostrobothnia	14	534	42.5	0.2	62.18
North Ostrobothnia	96	4,352	54.3	3.2	47.65
Kainuu	43	2,187	55.7	3.1	39.63
Lapland	172	8,075	60.2	-2.5	53.11
Åland	28	928	19.8	0.0	¹⁾ ..

1) [...] Data too uncertain for presentation.

Appendix table 1.2. Capacity and its utilization, January-March 2015

Region	Number of establishments	Number of bedrooms	Occupancy rate of bedrooms, %	Change of the occupancy rate compared to previous year, %-units	Average price of nights spend, in euros (incl. VAT 10 %)
Whole country	1,079	58,203	46.4	-0.2	54.79
Mainland Finland	1,053	57,379	46.8	-0.2	54.80
Uusimaa	139	14,751	54.6	-1.1	67.93
Varsinais-Suomi	60	3,525	40.6	-0.2	54.09
Satakunta	39	1,424	34.5	2.7	60.88
Kanta-Häme	31	1,492	30.8	-0.1	46.66
Pirkanmaa	70	4,407	43.8	1.2	53.97
Päijät-Häme	36	1,932	36.8	-2.5	49.78
Kymenlaakso	28	1,105	32.0	-2.2	57.16
South Karelia	34	1,666	40.3	-3.7	50.22
Etelä-Savo	81	2,255	30.6	-3.9	42.87
Pohjois-Savo	51	2,559	45.6	0.0	48.53
North Karelia	47	1,429	44.7	1.9	56.19
Central Finland	46	2,932	46.7	-0.2	46.67
South Ostrobothnia	43	1,672	39.0	1.8	42.00
Ostrobothnia	29	1,291	45.2	5.4	60.70
Central Ostrobothnia	14	534	36.6	-2.5	60.86
North Ostrobothnia	95	4,336	48.8	2.4	45.51
Kainuu	42	2,180	48.5	1.3	38.88
Lapland	166	7,890	53.8	-0.7	51.63
Åland	26	824	18.3	1.3	1) ..

1) [...] Data too uncertain for presentation.

Appendix table 2.1. Nights spend in all establishments, March 2015

Region	Nights spend, total	Change of nights spend, total, %	Nights spend, residents	Change of nights spend, residents, %	Nights spend, non-residents	Change of nights spend, non-residents, %
Whole country	1,577,183	-2.9	1,162,037	-0.5	415,146	-9.2
Mainland Finland	1,566,646	-3.0	1,157,891	-0.5	408,755	-9.4
Uusimaa	365,223	0.7	209,818	2.4	155,405	-1.5
Varsinais-Suomi	71,268	0.6	57,091	0.6	14,177	0.2
Satakunta	21,541	-4.3	17,129	-6.4	4,412	4.5
Kanta-Häme	25,040	-0.4	23,132	0.9	1,908	-13.5
Pirkanmaa	101,969	4.6	89,161	6.3	12,808	-5.8
Päijät-Häme	40,658	-11.0	33,684	-11.8	6,974	-6.9
Kymenlaakso	16,602	-9.6	12,214	4.7	4,388	-34.6
South Karelia	39,370	-23.4	25,124	-3.3	14,246	-43.9
Etelä-Savo	37,927	-8.3	32,162	4.6	5,765	-45.7
Pohjois-Savo	69,796	-2.9	62,192	0.5	7,604	-24.0
North Karelia	41,042	2.7	24,426	-7.2	16,616	21.9
Central Finland	76,280	-10.2	66,020	-8.5	10,260	-20.1
South Ostrobothnia	38,809	-4.3	37,070	-4.3	1,739	-4.2
Ostrobothnia	28,471	10.6	21,761	9.9	6,710	12.9
Central Ostrobothnia	10,259	8.1	9,159	4.2	1,100	55.8
North Ostrobothnia	151,916	-1.3	130,843	2.4	21,073	-19.5
Kainuu	116,299	-0.1	111,777	1.9	4,522	-32.5
Lapland	314,176	-6.6	195,128	-5.0	119,048	-9.1
Åland	10,537	8.8	4,146	16.4	6,391	4.4

Appendix table 2.2. Nights spend in all establishments, January-March 2015

Region	Nights spend, total	Change of nights spend, total, %	Nights spend, residents	Change of nights spend, residents, %	Nights spend, non-residents	Change of nights spend, non-residents, %
Whole country	4,311,149	-2.8	3,011,844	1.9	1,299,305	-12.1
Mainland Finland	4,287,716	-2.8	3,002,188	1.9	1,285,528	-12.3
Uusimaa	1,046,426	-1.3	610,615	4.3	435,811	-8.2
Varsinais-Suomi	198,719	-0.2	161,829	0.7	36,890	-3.9
Satakunta	59,524	-1.5	46,180	-4.9	13,344	12.6
Kanta-Häme	68,513	-0.6	60,896	-0.1	7,617	-4.2
Pirkanmaa	296,059	4.9	262,257	8.9	33,802	-18.3
Päijät-Häme	122,012	-13.4	102,800	-10.3	19,212	-26.9
Kymenlaakso	48,682	-10.7	33,218	3.1	15,464	-30.7
South Karelia	120,517	-20.6	74,407	14.4	46,110	-46.8
Etelä-Savo	108,815	-12.4	86,502	1.9	22,313	-43.3
Pohjois-Savo	193,249	-0.9	164,737	4.5	28,512	-23.8
North Karelia	95,689	-7.7	67,308	-4.7	28,381	-14.1
Central Finland	235,107	-6.8	195,913	-3.0	39,194	-22.1
South Ostrobothnia	104,147	-3.4	99,310	-2.8	4,837	-13.9
Ostrobothnia	73,381	10.2	56,723	9.6	16,658	12.0
Central Ostrobothnia	25,020	-2.6	22,342	-2.7	2,678	-1.7
North Ostrobothnia	400,221	0.9	316,086	4.3	84,135	-10.2
Kainuu	295,859	-0.7	267,343	3.8	28,516	-29.4
Lapland	795,776	-3.4	373,722	-2.9	422,054	-3.8
Åland	23,433	6.3	9,656	5.8	13,777	6.6

Appendix table 3.1. Hotel capacity and capacity utilization, March 2015

Region / municipality	Number of establishments	Number of bedrooms	Occupancy rate of bedrooms, %	Change compared to previous year, %-units	Room price, euros (incl. VAT 10 %)	¹⁾ RevPAR, euros (incl. VAT 10 %)
Whole country	613	50,713	52.5	0.0	95.31	50.05
Mainland Finland	602	50,045	52.9	0.0	95.35	50.41
Uusimaa	113	14,357	57.7	-0.6	100.48	57.98
Espoo	11	1,193	48.3	-0.3	88.43	42.75
Helsinki	52	8,530	62.5	-0.2	104.57	65.34
Vantaa	11	2,237	66.7	-4.3	102.47	68.32
Varsinais-Suomi	37	2,940	47.1	-0.0	84.51	39.80
Turku	19	2,038	49.1	-0.8	87.30	42.85
Satakunta	24	1,117	44.4	5.1	86.84	38.55
Pori	9	634	46.4	8.1	87.30	40.52
Kanta-Häme	18	1,355	34.2	-1.8	73.44	25.15
Hämeenlinna	8	733	31.5	-0.5	87.79	27.61
Pirkanmaa	42	3,875	48.7	1.1	93.99	45.79
Tampere	25	2,991	52.8	0.7	96.33	50.90
Päijät-Häme	15	1,758	38.9	-1.0	88.57	34.47
Lahti	6	646	52.8	2.2	99.69	52.59
Kymenlaakso	15	842	35.7	-1.2	88.89	31.72
Kouvola	6	427	36.2	-0.2	85.10	30.82
South Karelia	16	1,320	41.8	-6.3	91.05	38.07
Lappeenranta	8	750	50.7	-2.4	84.65	42.92
Etelä-Savo	28	1,551	36.2	-2.4	74.68	27.07
Mikkeli	8	551	46.0	2.5	76.26	35.09
Pohjois-Savo	31	2,347	49.6	-0.4	89.76	44.53
Kuopio	16	1,418	54.8	-0.7	95.82	52.50
North Karelia	22	1,203	61.6	7.6	98.40	60.59
Joensuu	7	611	78.8	8.7	100.08	78.91
Central Finland	27	2,623	50.2	-0.8	86.98	43.64
Jyväskylä	11	1,364	53.8	-2.3	89.37	48.11
South Ostrobothnia	22	1,458	46.1	0.6	74.60	34.37
Seinäjoki	6	553	55.0	5.2	84.95	46.76
Ostrobothnia	22	1,235	52.0	6.3	87.19	45.34
Vaasa	8	794	59.3	4.7	89.01	52.80
Central Ostrobothnia	9	478	44.6	-0.0	86.74	38.71
Kokkola	5	361	50.5	1.1	88.59	44.77
North Ostrobothnia	48	3,411	58.4	5.2	90.90	53.05
Kuusamo	11	773	54.5	-1.0	108.26	58.95
Oulu	12	1,540	66.6	5.0	92.04	61.32
Kainuu	20	1,770	58.2	2.0	82.22	47.82
Kajaani	6	409	39.6	2.2	76.12	30.17
Sotkamo	6	1,105	73.2	2.9	86.03	63.00
Lapland	93	6,405	63.7	-3.3	110.20	70.18
Rovaniemi	13	1,306	62.8	-9.0	90.32	56.75
Åland	11	668	23.8	-0.3
Maarianhamina	5	404	32.2	-0.6

1) RevPar = Average accommodation sales revenue per available room. Calculation formula: RevPar = Average room price * Occupancy rate. [...] Data too uncertain for presentation.

Appendix table 3.2. Hotel capacity and capacity utilization, January-March 2015

Region / municipality	Number of establishments	Number of bedrooms	Occupancy rate of bedrooms, %	Change compared to previous year, %-units	Room price, euros (incl. VAT 10 %)	¹⁾ RevPAR, euros (incl. VAT 10 %)
Whole country	610	50,406	49.3	0.1	93.57	46.17
Mainland Finland	600	49,820	49.6	0.1	93.59	46.45
Uusimaa	112	14,260	55.5	-0.8	98.98	54.96
Espoo	11	1,195	47.9	-0.5	83.69	40.12
Helsinki	51	8,449	59.6	-0.3	102.91	61.33
Vantaa	11	2,236	64.7	-5.6	101.89	65.97
Varsinais-Suomi	37	2,935	44.1	0.0	83.21	36.71
Turku	19	2,036	45.4	-0.6	86.09	39.10
Satakunta	24	1,116	41.9	4.5	82.88	34.75
Pori	9	635	44.3	5.2	81.56	36.11
Kanta-Häme	18	1,318	33.7	0.3	74.96	25.26
Hämeenlinna	8	737	30.9	-1.3	87.68	27.08
Pirkanmaa	42	3,882	45.5	1.6	92.69	42.22
Tampere	25	2,990	48.5	1.2	93.88	45.56
Päijät-Häme	15	1,747	38.8	-2.3	83.28	32.35
Lahti	6	646	46.2	-1.4	92.54	42.74
Kymenlaakso	15	873	36.2	0.1	87.27	31.62
Kouvola	6	427	34.6	-0.9	82.19	28.47
South Karelia	17	1,329	41.6	-7.0	93.00	38.70
Lappeenranta	8	750	51.1	1.7	82.76	42.28
Etelä-Savo	28	1,561	35.5	-2.3	71.67	25.41
Mikkeli	8	553	43.3	-0.2	76.29	33.02
Pohjois-Savo	31	2,350	46.6	-0.3	87.17	40.63
Kuopio	16	1,419	53.8	1.0	91.08	49.02
North Karelia	22	1,203	48.6	1.5	91.66	44.57
Joensuu	7	611	61.6	3.1	92.50	57.00
Central Finland	27	2,623	49.5	0.5	89.12	44.13
Jyväskylä	11	1,364	51.0	-1.9	89.59	45.72
South Ostrobothnia	22	1,442	44.1	1.0	74.59	32.89
Seinäjoki	6	551	50.3	1.8	83.98	42.25
Ostrobothnia	22	1,235	46.5	5.4	83.93	39.01
Vaasa	8	794	53.7	4.1	85.75	46.06
Central Ostrobothnia	9	478	38.2	-2.5	83.96	32.05
Kokkola	5	361	42.4	-3.5	86.97	36.88
North Ostrobothnia	48	3,404	52.5	3.8	88.48	46.44
Kuusamo	11	773	50.2	0.6	104.72	52.52
Oulu	12	1,540	61.7	4.9	88.92	54.85
Kainuu	20	1,769	51.0	-0.1	82.87	42.28
Kajaani	6	409	38.2	4.1	77.77	29.74
Sotkamo	6	1,108	61.8	-1.0	89.23	55.13
Lapland	92	6,294	58.3	-0.8	107.63	62.79
Rovaniemi	13	1,307	70.1	-4.6	103.10	72.23
Åland	10	586	23.0	2.8
Maarianhamina	5	359	33.0	4.1

1) RevPar = Average accommodation sales revenue per available room. Calculation formula: RevPar = Average room price
 *Occupancy rate[...] Data too uncertain for presentation.

Appendix table 4.1. Nights spend in hotels, March 2015

Region / municipality	Nights spend, total	Change of nights spend, total, %	Nights spend, residents	Change of nights spend, residents, %	Nights spend, non-residents	Change of nights spend, non-residents, %
Whole country	1,320,609	-2.4	954,869	0.2	365,740	-8.6
Mainland Finland	1,312,252	-2.5	951,730	0.2	360,522	-8.8
Uusimaa	347,131	0.1	201,032	2.7	146,099	-3.2
Espoo	23,748	-3.3	15,155	2.3	8,593	-11.8
Helsinki	219,480	1.6	111,082	0.9	108,398	2.5
Vantaa	65,381	-2.7	43,307	10.4	22,074	-21.0
Varsinais-Suomi	63,435	-0.5	51,572	1.5	11,863	-8.4
Turku	44,353	-0.8	35,645	0.6	8,708	-6.0
Satakunta	19,407	-3.2	15,099	-5.3	4,308	5.1
Pori	11,621	6.7	9,507	6.9	2,114	5.8
Kanta-Häme	22,763	0.2	20,891	1.7	1,872	-14.4
Hämeenlinna	11,440	-0.2	10,295	2.2	1,145	-17.4
Pirkanmaa	88,883	5.0	76,622	6.2	12,261	-1.9
Tampere	71,882	6.9	60,470	8.2	11,412	0.9
Päijät-Häme	33,819	-11.1	27,207	-13.8	6,612	2.0
Lahti	14,728	-5.7	9,674	-15.9	5,054	22.9
Kymenlaakso	12,665	-19.3	9,273	-6.4	3,392	-41.3
Kouvola	6,679	-10.9	5,442	-5.8	1,237	-27.9
South Karelia	31,972	-28.1	20,172	-8.2	11,800	-47.5
Lappeenranta	21,431	-19.6	15,812	-5.2	5,619	-43.7
Etelä-Savo	27,174	-6.6	24,671	-0.4	2,503	-41.9
Mikkeli	11,674	2.1	10,418	10.5	1,256	-37.5
Pohjois-Savo	62,682	-0.9	57,093	1.7	5,589	-21.7
Kuopio	42,775	0.5	38,593	2.9	4,182	-17.0
North Karelia	34,866	5.2	20,508	-6.8	14,358	28.9
Joensuu	19,731	1.5	10,228	-12.6	9,503	22.9
Central Finland	70,922	-10.4	61,060	-8.6	9,862	-20.4
Jyväskylä	32,499	-6.9	28,291	-5.3	4,208	-16.8
South Ostrobothnia	35,061	-3.0	33,421	-3.0	1,640	-1.7
Seinäjoki	12,673	-1.0	11,663	-3.5	1,010	42.9
Ostrobothnia	25,342	10.4	18,798	8.1	6,544	17.5
Vaasa	18,540	4.7	13,223	2.7	5,317	10.2
Central Ostrobothnia	9,015	5.1	8,307	3.6	708	26.2
Kokkola	7,483	8.5	6,869	8.3	614	10.8
North Ostrobothnia	111,026	3.4	94,156	6.6	16,870	-11.3
Kuusamo	32,638	-6.1	27,815	2.6	4,823	-37.1
Oulu	50,454	5.9	43,799	8.4	6,655	-7.7
Kainuu	82,761	2.3	80,505	4.1	2,256	-37.2
Kajaani	7,423	2.6	6,703	2.9	720	0.4
Sotkamo	72,315	3.6	70,961	5.4	1,354	-45.8
Lapland	233,328	-6.2	131,343	-3.6	101,985	-9.3
Rovaniemi	41,889	-8.1	16,852	1.6	25,037	-13.6
Åland	8,357	10.6	3,139	18.8	5,218	6.1
Maarianhamina	6,904	17.9	3,076	26.9	3,828	11.6

Appendix table 4.2. Nights spend in hotels, January-March 2015

Region / municipality	Nights spend, total	Change of nights spend, total, %	Nights spend, residents	Change of nights spend, residents, %	Nights spend, non-residents	Change of nights spend, non-residents, %
Whole country	3,671,360	-1.9	2,545,320	3.3	1,126,040	-12.0
Mainland Finland	3,652,497	-2.0	2,537,787	3.2	1,114,710	-12.1
Uusimaa	1,002,995	-1.1	588,040	4.9	414,955	-8.5
Espoo	71,872	-1.4	45,674	14.8	26,198	-20.9
Helsinki	633,064	-0.0	329,354	4.8	303,710	-4.7
Vantaa	191,213	-4.8	125,315	3.0	65,898	-16.8
Varsinais-Suomi	179,643	-0.1	147,637	1.8	32,006	-8.1
Turku	124,377	0.3	101,872	2.9	22,505	-9.9
Satakunta	54,048	0.1	41,512	-3.7	12,536	15.4
Pori	33,533	5.4	26,471	1.8	7,062	21.5
Kanta-Häme	63,210	1.3	56,033	1.9	7,177	-3.3
Hämeenlinna	33,028	-2.8	29,263	-0.4	3,765	-17.7
Pirkanmaa	254,736	6.9	222,903	10.8	31,833	-14.3
Tampere	198,817	8.6	169,930	13.2	28,887	-12.2
Päijät-Häme	104,477	-11.9	87,930	-8.8	16,547	-25.2
Lahti	38,707	-10.6	27,518	-9.0	11,189	-14.3
Kymenlaakso	37,314	-17.9	25,810	-7.2	11,504	-34.6
Kouvola	18,605	-11.4	14,557	-3.6	4,048	-31.4
South Karelia	97,102	-24.7	60,944	13.2	36,158	-51.8
Lappeenranta	63,575	-14.9	46,677	14.2	16,898	-50.1
Etelä-Savo	78,110	-7.2	68,714	0.2	9,396	-39.8
Mikkeli	32,741	-3.9	27,873	6.3	4,868	-37.9
Pohjois-Savo	173,310	-0.0	152,016	5.4	21,294	-26.9
Kuopio	122,914	3.1	107,610	9.2	15,304	-26.0
North Karelia	82,973	-3.8	59,238	-1.2	23,735	-9.8
Joensuu	45,210	-2.8	30,299	-4.1	14,911	-0.0
Central Finland	218,625	-6.9	182,215	-2.6	36,410	-24.0
Jyväskylä	95,734	-3.0	83,504	-0.0	12,230	-19.7
South Ostrobothnia	94,999	-1.7	91,050	-1.4	3,949	-8.0
Seinäjoki	34,377	-1.4	31,795	-2.8	2,582	20.7
Ostrobothnia	66,726	9.6	50,389	8.0	16,337	14.7
Vaasa	49,554	2.1	35,553	-3.0	14,001	17.5
Central Ostrobothnia	21,868	-4.2	20,181	-3.7	1,687	-9.6
Kokkola	17,728	-2.8	16,201	-3.1	1,527	-0.4
North Ostrobothnia	292,191	3.7	230,447	7.5	61,744	-8.4
Kuusamo	91,049	0.8	65,631	11.2	25,418	-18.8
Oulu	133,994	5.7	113,862	9.1	20,132	-10.0
Kainuu	216,360	1.7	195,589	7.5	20,771	-32.4
Kajaani	20,797	7.6	18,842	11.1	1,955	-17.5
Sotkamo	185,982	2.4	170,618	8.6	15,364	-37.1
Lapland	613,810	-2.8	257,139	-0.8	356,671	-4.3
Rovaniemi	140,836	0.6	43,731	6.3	97,105	-1.8
Åland	18,863	11.4	7,533	11.0	11,330	11.6
Maarianhamina	16,281	16.7	7,174	12.2	9,107	20.5

Appendix table 5.1. Visitor arrivals and nights spend by country of residence, March 2015

Country of residence	Visitor arrivals in all accommodation establishments	Nights spend in all accommodation establishments	Change of nights spend in all accommodation establishments, %	Nights spend in hotels	Change of nights spend in hotels, %
Total	784,350	1,577,183	-2.9	1,320,609	-2.4
Finland	604,663	1,162,037	-0.5	954,869	0.2
Foreign countries	179,687	415,146	-9.2	365,740	-8.6
Sweden	19,814	32,295	5.5	31,312	6.4
Germany	17,323	46,957	4.5	42,875	5.0
Russia	26,300	55,056	-49.7	42,178	-49.4
United Kingdom	13,739	31,392	3.5	28,365	3.7
United States	6,021	13,373	12.2	12,976	11.8
Norway	7,828	16,804	-1.2	12,510	-13.1
Netherlands	6,612	17,172	-8.8	15,060	-4.4
Italy	4,077	9,310	13.4	8,680	14.5
France	7,879	27,604	1.3	25,093	1.9
Japan	7,751	14,925	-15.1	14,523	-14.7
Estonia	6,749	17,935	7.0	13,101	-6.2
Switzerland	3,321	9,878	-2.0	8,023	-1.2
Spain	2,901	6,918	-4.2	6,156	-5.1
China	3,810	8,064	25.8	7,769	27.4

Appendix table 5.2. Visitor arrivals and nights spend by country of residence, January-March 2015

Country of residence	Visitor arrivals in all accommodation establishments	Nights spend in all accommodation establishments	Change of nights spend in all accommodation establishments, %	Nights spend in hotels	Change of nights spend in hotels, %
Total	2,169,806	4,311,149	-2.8	3,671,360	-1.9
Finland	1,637,414	3,011,844	1.9	2,545,320	3.3
Foreign countries	532,392	1,299,305	-12.1	1,126,040	-12.0
Sweden	50,878	81,653	7.1	79,054	7.3
Germany	46,009	121,500	7.6	111,123	7.9
Russia	100,651	266,482	-46.0	201,068	-48.3
United Kingdom	41,575	117,780	2.1	100,153	0.5
United States	15,039	34,443	9.2	33,445	10.1
Norway	17,533	37,230	10.9	31,223	4.6
Netherlands	19,238	56,585	-4.2	46,408	-0.9
Italy	11,422	25,634	15.1	23,729	15.3
France	29,413	95,813	8.4	88,813	9.1
Japan	24,154	45,363	-15.1	44,157	-14.7
Estonia	18,156	46,855	4.5	36,674	-2.0
Switzerland	11,494	38,638	4.2	25,447	-1.9
Spain	7,761	19,509	1.3	17,855	1.4
China	12,837	24,414	30.8	23,599	35.0

Appendix table 6. Nights spend in all establishments, 2015

Month	Nights spend, total	Change of nights spend, total, %	Nights spend, residents	Change of nights spend, residents, %	Nights spend, non-residents	Change of nights spend, non-residents, %
Total	4,311,149	-2.8	3,011,844	1.9	1,299,305	-12.1
January	1,278,491	-7.7	789,983	3.1	488,508	-21.1
February	1,455,475	2.2	1,059,824	3.7	395,651	-1.8
March	1,577,183	-2.9	1,162,037	-0.5	415,146	-9.2

Inquiries

Marjut Tuominen 029 551 3556

Ossi Nurmi 029 551 2984

Director in charge:

Hannele Orjala

liikenne.matkailu@stat.fi

www.stat.fi

Source: Accommodation Statistics. Statistics Finland