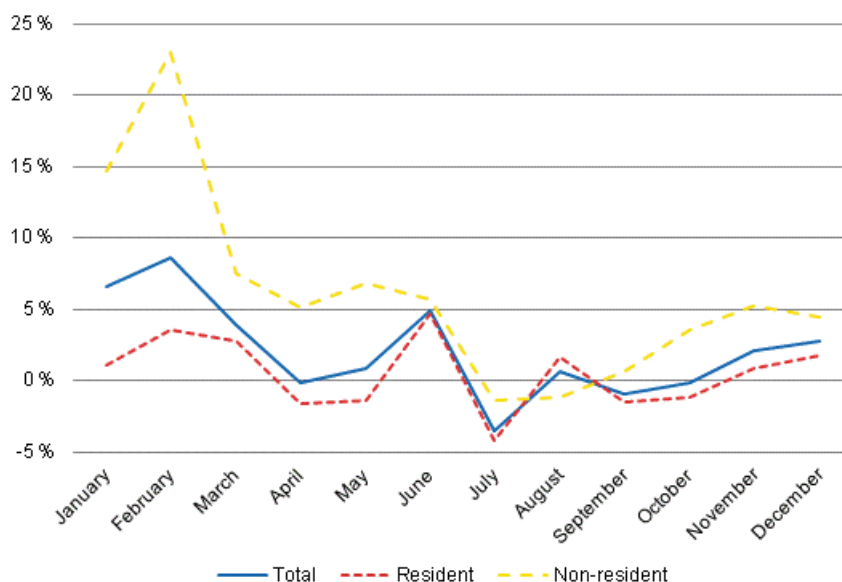


Accommodation statistics 2012

Foreign demand for accommodation services grew by five per cent in 2012

In 2012, the demand for accommodation services grew by two per cent from the previous year. A record level of 20 million was exceeded in the number of overnight stays. As in the year before, the engine behind the growth was increased foreign demand. Overnight stays by foreign tourists increased by five per cent while the number of nights spent by domestic tourists remained at last year's level. In 2012, accommodation establishments in Finland recorded a total of 20.3 million overnight stays, of which domestic tourists accounted for 14.5 million and foreign tourists for the remaining 5.8 million. These figures are data from Statistics Finland's statistics on accommodation establishments and they have been collected from accommodation establishments with at least 20 beds or caravan pitches with electricity connection, and youth hostels.

Year-on-year changes in nights spent (%) by month 2012–2011

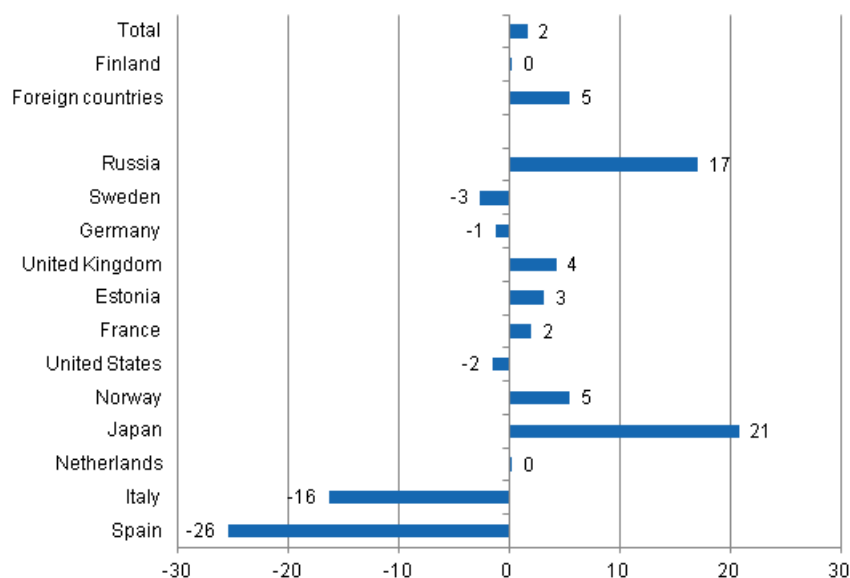


Russians formed the largest group of foreign visitors in 2012

Russians have been the largest group of foreign visitors to Finland since 2006, and 1.5 million overnight stays were recorded for Russian tourists in 2012, which was 17 per cent more than in 2011. The share of Russians in all overnight stays by foreign tourists was 26 per cent. Swedish and German visitors came next. The overnight stays of both groups represented some one-third of the overnight stays by Russians, or good 0.5 million overnight stays. Overnight stays by Swedish visitors decreased by 2.7 per cent, and those by visitors from Germany by 1.3 per cent from 2011. By contrast, overnight stays by British tourists made an upturn after a three-year recession and increased by four per cent in 2012. Overnight stays recorded for them at accommodation establishments numbered nearly 406,000. Overnight stays by Estonian and French tourists rose to good 200,000 nights each and the increase from 2011 amounted to two to three per cent. Among the most important countries of inbound tourism into Finland, overnight stays of visitors from Spain and Italy decreased most. Overnight stays by both groups fell throughout 2012. Accommodation establishments recorded 26 per cent fewer overnight stays for Spanish tourists and 16 per cent fewer for Italian tourists than in 2011.

Accommodation establishments recorded a slight loss in the number of nights spent by tourists from EU countries in 2012, which was partly explained by the steep decrease in overnight stays of visitors from Spain and Italy. Overall, nearly 2.9 million overnight stays were recorded for visitors from EU countries, which was 1.7 per cent fewer than in 2011. By contrast, considerable growth was seen in the overnight stays by Asians that increased by nearly ten per cent. Overnight stays recorded for Japanese visitors increased by as much as 20.8 per cent and those for Chinese visitors by 8.6 per cent from the previous year. Overnight stays by visitors from South Korea grew by 6.7 per cent and those by visitors from Taiwan by good one per cent, while overnight stays by Indian tourists decreased by one-fifth from 2011.

Change in overnight stays 2012 / 2011, %

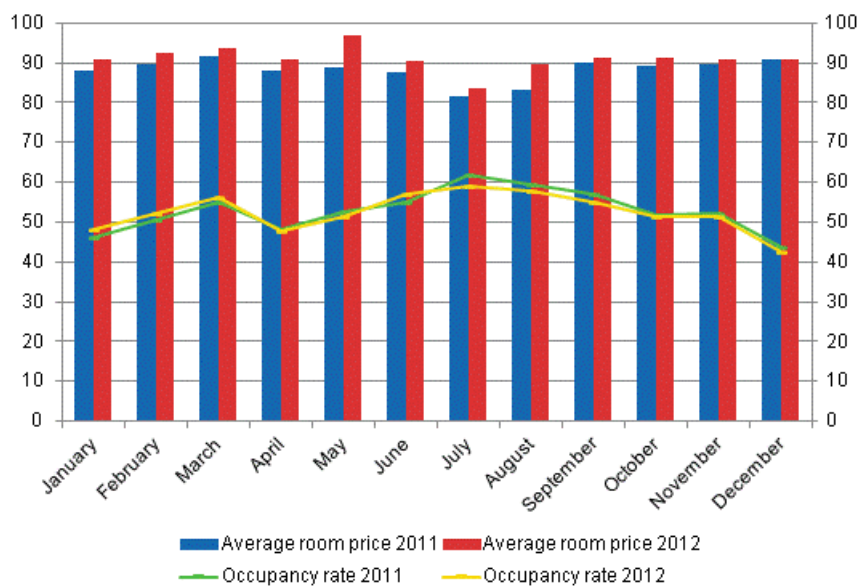


Overnight stays at hotels numbered 16.3 million

In 2012, the total number of nights spent in hotels totalled 16.3 million, which was 2.1 per cent higher than in 2011. Recorded nights spent by resident tourists in hotels numbered 11.4 million. The number was 0.8 per cent higher than in the year before. Overnight stays by foreign tourists increased by 5.4 per cent and hotels recorded nearly 4.9 million of them.

The occupancy rate of hotel rooms for the whole country was 52.6 per cent in 2012. One year earlier, it was nearly the same at 52.9 per cent. The average price of a hotel room made an upturn in 2011, when the price was EUR 88. In 2012, the average price of a hotel room rose close to EUR 91.

Hotel room occupancy rate and the monthly average price



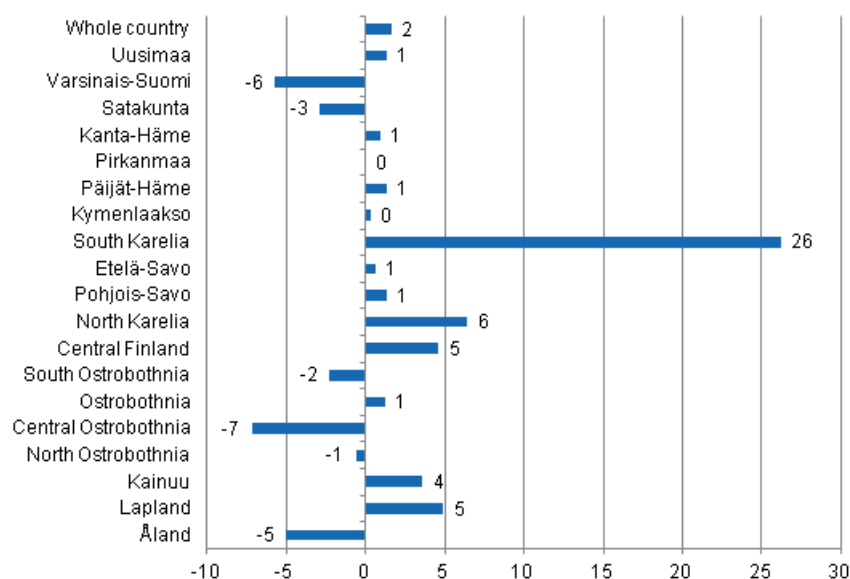
Regional development of overnight stays in 2012

In 2012, the largest growth percentage by far for overnight stays was recorded in the region of South Karelia where the capacity of accommodation establishments also increased heavily. Overnight stays in South Karelia grew by 26.3 per cent, while the second highest growth was seen in North Karelia, 6.4 per cent. Central Finland and Lapland both had a growth of nearly five per cent. By contrast, overnight stays in Central Ostrobothnia decreased by 7.2 per cent, in Varsinais-Suomi by 5.7 per cent and in Åland by 5.0 per cent. In absolute numbers, overnight stays in accommodation establishments increased most in South Karelia and Lapland, where good 100,000 more stays than in 2011 were recorded for both.

The share of overnight stays by foreign tourists of all overnight stays was 47 per cent in South Karelia, 45 per cent in Uusimaa and 41 per cent in Lapland. These regions also recorded most overnight stays by Russians. In Uusimaa, good 420,000 overnight stays were recorded for Russians, in South Karelia 250,000 and in Lapland almost 120,000.

In Kymenlaakso, the share of overnight stays by foreign tourists of all overnight stays was 29 per cent and in Etelä-Savo close to 24 per cent. In other regions of Finnish mainland, at most one night in five was spent by a foreign visitor.

Change in overnight stays by region 2012/2011,%



The capacity of accommodation establishments increased in 2012

Population of the accommodation statistics was extended in 2012 as a result of the regulation no 692/2011 of the European Parliament and the Council concerning European statistics on tourism, according to which data are collected from accommodation establishments with at least 20 beds or caravan pitches with electricity connection. The population of the accommodation statistics was extended to smaller accommodation establishments than before. The number of accommodation establishments contained in the statistics grew by good one hundred in 2012, by some 3,000 rooms and over 8,000 beds. In absolute numbers, the biggest changes were directed at holiday villages, hotels and youth hostels. Because of the revision, the capacity data are not fully comparable with those for earlier years.

In 2012, the statistics covered a total of 1,427 accommodation establishments; 682 hotels, 157 guest houses, 286 holiday villages, 246 camping sites and 56 youth hostels. Holiday villages of hotel calibre are included in hotels. The accommodation establishments had 66,418 rooms (or cottages) with a total of 161,632 beds. In addition to room and bed capacity, the accommodation establishments had 21,261 caravan pitches with electricity connection of which 16,652 were located at camp sites.

When the capacity of accommodation establishments is viewed according to the number of rooms, the statistics contained 1,057 establishments with less than 50 rooms and 370 establishments with at least 50 rooms in 2012. Measured by bed capacity, there were 976 establishments with less than one hundred beds and 451 establishments with at least one hundred beds.

In 2012, there were 1,073 accommodation establishments that were open year round and 354 establishments that were open part of the year; these were mostly camp sites and holiday villages.

Contents

Tables

Appendix tables

Appendix table 1. Capacity and its utilization in 2012.....	6
Appendix table 2. Nights spend in all establishments in 2012.....	7
Appendix table 3. Hotel capacity and capacity utilization in 2012.....	8
Appendix table 4. Nights spend in hotels in 2012.....	9
Appendix table 5. Visitor arrivals and nights spend by country of residence in 2012.....	10
Appendix table 6. Nights spend in all establishments by month in 2012.....	11
Appendix table 7.1. Nights spent by non-residents and annual change (%) in all establishments in 2012.....	11
Appendix table 7.2. Nights spent by non-residents and annual change (%) in all establishments in 2012.....	12
Appendix table 8.1. Nights spent by non-residents and annual change (%) in hotels in 2012.....	13
Appendix table 8.2. Nights spent by non-residents and annual change (%) in hotels in 2012.....	14
Appendix table 9.1. Capacity of accommodation establishments and capacity utilization by type of establishment in 2012.....	15
Appendix table 9.2. Capacity of accommodation establishments and capacity utilization by type of establishment, May-August 2012.....	15
Appendix table 10.1. Capacity of accommodation establishments by type of establishment in 2012.....	15
Appendix table 10.2. Capacity of accommodation establishments by opening season in 2012.....	16
Appendix table 10.3. Capacity of accommodation establishments by number of bed-places in 2012.....	16
Appendix table 10.4. Capacity of accommodation establishments by number of rooms in 2012.....	17

Appendix tables

Appendix table 1. Capacity and its utilization in 2012

Region	Number of establishments on average	Number of bedrooms on average	Occupancy rate of bedrooms, %	Change of the occupancy rate compared to previous year, %-units	Average price of nights spend, in euros (incl. VAT 9 %)
Whole country	1,124	59,776	49.1	-0.6	49.75
Mainland Finland	1,077	58,582	49.4	-0.6	49.81
Uusimaa	145	14,668	63.5	-0.2	65.29
Varsinais-Suomi	70	3,834	47.8	-4.0	45.59
Satakunta	39	1,563	40.9	-2.1	47.84
Kanta-Häme	30	1,458	39.3	-1.2	48.84
Pirkanmaa	70	4,442	50.4	-3.9	50.28
Päijät-Häme	31	1,954	43.5	0.4	45.16
Kymenlaakso	24	1,153	41.4	0.4	45.31
South Karelia	34	1,820	53.9	-0.6	45.86
Etelä-Savo	66	2,332	38.8	-1.6	37.00
Pohjois-Savo	49	2,579	49.4	-1.2	43.86
North Karelia	52	1,713	39.7	1.8	41.24
Central Finland	53	3,063	47.7	1.5	42.99
South Ostrobothnia	44	1,797	42.6	-3.7	38.58
Ostrobothnia	32	1,355	47.5	2.1	45.85
Central Ostrobothnia	17	584	40.1	-3.5	46.72
North Ostrobothnia	98	4,334	43.9	-1.3	39.21
Kainuu	45	2,123	45.4	0.5	35.84
Lapland	182	7,811	40.6	1.4	42.19
Åland	47	1,194	34.5	-2.2	..

Appendix table 2. Nights spend in all establishments in 2012

Region	Nights spend, total	Change of nights spend, total, %	Nights spend, residents	Change of nights spend, residents, %	Nights spend, non-residents	Change of nights spend, non-residents, %
Whole country	20,317,582	1.6	14,514,623	0.2	5 802 959	5.4
Mainland Finland	19,911,914	1.8	14,355,566	0.3	5 556 348	5.9
Uusimaa	5,262,273	1.3	2,870,188	1.0	2 392 085	1.7
Varsinais-Suomi	1,233,921	-5.7	1,013,254	-5.6	220 667	-6.2
Satakunta	416,777	-2.9	353,836	-2.2	62 941	-6.6
Kanta-Häme	397,775	0.9	345,672	-1.5	52 103	20.0
Pirkanmaa	1,515,006	0.0	1,295,864	1.0	219 142	-5.6
Päijät-Häme	619,672	1.3	516,065	-0.8	103 607	13.6
Kymenlaakso	334,931	0.3	236,916	-1.7	98 015	5.5
South Karelia	714,387	26.3	377,895	27.9	336 492	24.6
Etelä-Savo	700,681	0.5	534,722	-3.8	165 959	17.1
Pohjois-Savo	888,335	1.3	760,078	-0.0	128 257	10.1
North Karelia	490,603	6.4	393,877	0.2	96 726	42.5
Central Finland	1,152,496	4.6	970,759	4.4	181 737	5.6
South Ostrobothnia	674,157	-2.3	645,637	-2.0	28 520	-8.4
Ostrobothnia	427,034	1.2	350,550	1.7	76 484	-1.4
Central Ostrobothnia	159,098	-7.2	144,979	-8.5	14 119	9.0
North Ostrobothnia	1,569,320	-0.6	1,300,288	-1.2	269 032	2.4
Kainuu	955,962	3.6	840,938	2.6	115 024	11.9
Lapland	2,399,486	4.9	1,404,048	-0.4	995 438	13.5
Åland	405,668	-5.0	159,057	-4.3	246 611	-5.4

Appendix table 3. Hotel capacity and capacity utilization in 2012

Region / municipality	Number of establishments on average	Number of bedrooms on average	Occupancy rate of bedrooms, %	Change compared to previous year, %-units	Room price, euros (incl.VAT 9 %)	¹⁾ RevPAR, euros (incl. VAT 9 %)
Whole country	635	50,611	52.6	-0.3	90.96	47.86
Mainland Finland	621	49,883	52.8	-0.2	90.92	48.02
Uusimaa	117	14,216	64.1	-0.3	100.77	64.65
Espoo	12	1,214	57.4	0.1	82.06	47.13
Helsinki	53	8,419	69.6	-0.3	106.24	73.95
Vantaa	11	2,151	69.0	0.8	98.93	68.22
Varsinais-Suomi	37	3,115	52.4	-2.9	83.10	43.57
Turku	18	2,057	55.9	-3.5	83.27	46.53
Satakunta	24	1,241	45.0	-2.7	83.28	37.48
Pori	9	683	47.3	-1.5	79.96	37.84
Kanta-Häme	18	1,255	41.8	-1.4	88.73	37.11
Hämeenlinna	8	733	44.1	-1.4	96.06	42.41
Pirkanmaa	43	3,743	52.6	-4.4	91.59	48.18
Tampere	23	2,657	58.3	-4.6	93.99	54.78
Päijät-Häme	17	1,756	45.3	0.7	81.28	36.83
Lahti	7	674	49.9	2.1	83.28	41.54
Kymenlaakso	16	948	44.3	0.9	82.08	36.40
Kouvola	6	430	47.7	4.2	79.88	38.07
South Karelia	18	1,415	59.5	-0.2	93.93	55.92
Lappeenranta	7	737	68.1	-0.4	88.39	60.21
Etelä-Savo	29	1,722	42.6	-1.4	79.89	34.05
Mikkeli	7	532	50.4	-3.4	83.50	42.11
Pohjois-Savo	28	2,244	51.2	-1.5	83.68	42.86
Kuopio	10	1,041	61.0	-2.7	89.18	54.39
North Karelia	25	1,355	43.9	2.2	79.89	35.07
Joensuu	10	754	49.9	3.4	78.65	39.26
Central Finland	28	2,620	51.6	2.0	91.18	47.09
Jyväskylä	10	1,356	56.2	-4.0	93.37	52.46
South Ostrobothnia	26	1,482	48.5	-3.3	76.27	37.00
Seinäjoki	8	608	50.8	-5.4	79.02	40.15
Ostrobothnia	22	1,216	50.5	2.2	83.74	42.29
Vaasa	8	793	56.1	4.1	86.10	48.28
Central Ostrobothnia	10	504	42.3	-4.2	77.54	32.84
Kokkola	5	364	48.7	-5.2	79.77	38.82
North Ostrobothnia	48	3,362	47.3	-0.7	83.47	39.44
Kuusamo	10	706	38.7	1.4	91.19	35.33
Oulu	11	1,501	59.7	-3.1	85.06	50.82
Kainuu	22	1,667	50.7	1.3	75.31	38.19
Kajaani	6	393	41.8	5.5	77.03	32.19
Lapland	94	6,021	44.1	3.0	87.19	38.49
Rovaniemi	12	1,235	53.3	2.2	83.12	44.28
Åland	14	728	38.7	-3.4
Maarianhamina	7	468	47.0	-2.1

1) RevPar = Average accommodation sales revenue per available room. Calculation formula: RevPar = Average room price * Occupancy rate.

Appendix table 4. Nights spend in hotels in 2012

Region / municipality	Nights spend, total	Change of nights spend, total, %	Nights spend, residents	Change of nights spend, residents, %	Nights spend, non-residents	Change of nights spend, non-residents, %
Whole country	16,284,597	2.1	11,406,545	0.8	4,878,052	5.4
Mainland Finland	16,093,257	2.2	11,319,605	0.9	4,773,652	5.6
Uusimaa	4,954,534	1.8	2,667,703	1.4	2,286,831	2.4
Espoo	372,381	7.6	211,924	5.4	160,457	10.6
Helsinki	3,196,050	0.4	1,458,103	0.2	1,737,947	0.6
Vantaa	809,617	3.6	526,084	1.0	283,533	8.7
Varsinais-Suomi	997,650	-5.1	818,680	-4.5	178,970	-7.6
Turku	696,387	-5.1	562,575	-5.3	133,812	-4.1
Satakunta	290,563	2.4	237,121	5.8	53,442	-10.6
Pori	169,992	12.8	146,501	14.9	23,491	0.9
Kanta-Häme	322,009	0.2	272,796	-3.5	49,213	27.8
Hämeenlinna	195,210	-1.8	159,430	-7.4	35,780	34.9
Pirkanmaa	1,206,414	3.3	1,029,470	3.8	176,944	0.5
Tampere	901,701	7.7	747,359	8.4	154,342	4.3
Päijät-Häme	510,663	0.9	422,551	-1.3	88,112	13.2
Lahti	181,863	-3.3	131,977	-5.8	49,886	4.2
Kymenlaakso	237,332	4.4	160,610	1.6	76,722	10.7
Kouvola	112,588	8.2	88,917	4.6	23,671	24.2
South Karelia	587,887	16.9	304,463	21.3	283,424	12.5
Lappeenranta	330,664	44.1	215,140	47.7	115,524	37.9
Etelä-Savo	454,460	-0.9	373,000	-2.3	81,460	5.7
Mikkeli	163,770	-0.1	125,718	-4.9	38,052	20.1
Pohjois-Savo	728,436	-0.9	636,630	-1.6	91,806	4.1
Kuopio	374,097	6.0	325,844	4.9	48,253	14.1
North Karelia	369,369	4.4	299,448	-1.2	69,921	38.4
Joensuu	203,972	5.1	158,134	-1.9	45,838	40.1
Central Finland	983,912	5.9	819,267	5.5	164,645	8.2
Jyväskylä	430,171	2.1	347,158	-0.3	83,013	13.8
South Ostrobothnia	483,904	-2.2	462,676	-2.2	21,228	-3.7
Seinäjoki	164,469	-2.6	153,755	-1.0	10,714	-21.0
Ostrobothnia	333,404	-0.3	263,495	-1.1	69,909	2.7
Vaasa	249,350	-0.7	195,303	-0.2	54,047	-2.4
Central Ostrobothnia	114,313	-8.3	103,727	-9.7	10,586	7.0
Kokkola	91,592	-8.2	82,296	-10.6	9,296	19.6
North Ostrobothnia	1,008,989	-0.8	825,851	-1.6	183,138	3.0
Kuusamo	239,038	0.5	180,424	-2.3	58,614	10.2
Oulu	510,124	-0.2	416,681	-0.7	93,443	1.9
Kainuu	741,463	7.5	651,812	5.9	89,651	21.1
Kajaani	88,980	0.4	78,377	-1.3	10,603	15.0
Lapland	1,767,955	5.2	970,305	-1.2	797,650	14.0
Rovaniemi	425,280	2.4	187,189	2.9	238,091	2.1
Åland	191,340	-4.1	86,940	-3.8	104,400	-4.4
Maarianhamina	141,755	-3.5	71,863	-4.2	69,892	-2.8

Appendix table 5. Visitor arrivals and nights spend by country of residence in 2012

Country of residence	Visitor arrivals in all accommodation establishments	Nights spend in all accommodation establishments	Change of nights spend in all accommodation establishments, %	Nights spend in hotels	Change of nights spend in hotels, %
Total	10,887,708	20,317,582	1.6	16,284,597	2.1
Finland	8,109,244	14,514,623	0.2	11,406,545	0.8
Foreign countries	2,778,464	5,802,959	5.4	4,878,052	5.4
Russia	731,261	1,506,900	17.1	1,233,312	12.8
Sweden	301,651	537,002	-2.7	404,229	-1.5
Germany	268,810	534,239	-1.3	440,992	-1.3
United Kingdom	160,999	405,541	4.2	362,803	6.2
Estonia	94,800	235,482	3.2	165,832	8.9
France	83,217	217,886	2.0	189,695	2.5
United States	91,181	198,725	-1.6	192,717	-1.0
Norway	92,478	182,639	5.4	142,216	9.9
Japan	91,783	176,919	20.8	171,111	21.5
Netherlands	72,961	164,918	0.2	129,435	-0.1
Switzerland	58,908	132,900	12.6	101,826	15.5
Italy	60,000	130,847	-16.4	115,344	-15.6
China	59,491	100,057	8.6	96,123	8.4
Spain	45,206	96,820	-25.5	84,100	-26.6
Denmark	50,618	86,676	-8.6	79,884	-9.1
Poland	28,451	76,385	2.0	63,939	7.4
Austria	30,705	57,494	0.3	49,434	-0.0
Belgium	24,927	53,449	9.0	47,517	7.1
Australia	21,553	48,035	7.0	44,716	9.1
India	14,432	42,756	-20.3	42,067	-17.9
Latvia	20,256	42,368	10.0	31,448	12.3
Canada	15,075	36,792	5.9	34,055	5.8
Thailand	8,387	35,575	-6.2	9,580	1.3
Czech	14,262	35,273	8.6	29,256	9.9
Lithuania	13,697	31,998	26.6	23,421	23.6
South Korea	13,609	26,013	6.7	23,994	8.4
Brazil	8,123	20,207	23.7	19,382	24.8
Hungary	8,224	20,157	-20.6	17,313	-21.5

Appendix table 6. Nights spend in all establishments by month in 2012

Month	Nights spend, total	Change of nights spend, total, %	Nights spend, residents	Change of nights spend, residents, %	Nights spend, non-residents	Change of nights spend, non-residents, %
Total	20,317,582	1.6	14,514,623	0.2	5,802,959	5.4
January	1,402,973	6.6	786,481	1.1	616,492	14.7
February	1,458,910	8.7	1,028,832	3.7	430,078	22.7
March	1,739,908	3.9	1,289,468	2.8	450,440	7.4
April	1,395,179	-0.2	1,076,616	-1.7	318,563	5.2
May	1,340,614	0.8	952,533	-1.4	388,081	6.9
June	2,130,643	4.9	1,575,898	4.7	554,745	5.7
July	3,025,917	-3.5	2,293,479	-4.2	732,438	-1.3
August	2,216,909	0.7	1,513,554	1.6	703,355	-1.2
September	1,555,328	-0.9	1,152,833	-1.5	402,495	0.7
October	1,396,108	-0.2	1,071,302	-1.2	324,806	3.5
November	1,311,753	2.1	955,692	0.9	356,061	5.3
December	1,343,340	2.8	817,935	1.7	525,405	4.5
Spring (January-April)	5,996,970	4.7	4,181,397	1.5	1,815,573	12.7
Summer (May-August)	8,714,083	0.2	6,335,464	-0.3	2,378,619	1.5
Autumn (September-December)	5,606,529	0.8	3,997,762	-0.2	1,608,767	3.5

Appendix table 7.1. Nights spent by non-residents and annual change (%) in all establishments in 2012

Region	Foreign countries, total		Russia		Sweden		Germany		United Kingdom		Estonia	
Whole country	5,802,959	5.4	1,506,900	17.1	537,002	-2.7	534,239	-1.3	405,541	4.2	235,482	3.2
Mainland Finland	5,556,348	5.9	1,502,254	17.2	342,106	-1.4	521,352	-1.3	404,033	4.2	228,522	3.6
Uusimaa	2,392,085	1.7	436,710	6.6	172,762	-2.3	210,252	-4.3	157,852	-8.1	99,195	7.8
Varsinais-Suomi	220,667	-6.2	33,137	15.2	39,337	-12.9	21,480	-6.6	10,081	-14.5	14,215	-1.8
Satakunta	62,941	-6.6	4,125	15.6	8,560	-7.9	11,943	-35.9	3,737	3.1	4,529	6.8
Kanta-Häme	52,103	20.0	8,672	9.8	3,869	16.5	4,462	3.7	2,112	46.7	2,722	-23.2
Pirkanmaa	219,142	-5.6	36,084	4.8	17,018	0.7	22,633	-6.2	11,379	-13.0	16,159	6.8
Päijät-Häme	103,607	13.6	47,099	27.9	5,763	6.9	8,905	-5.5	2,476	23.2	7,196	4.5
Kymenlaakso	98,015	5.5	62,331	25.5	3,086	-1.2	5,393	7.3	3,251	-4.1	4,328	-8.3
South Karelia	336,492	24.6	291,504	26.8	4,548	5.8	4,622	-9.7	1,492	4.9	4,150	-8.4
Etelä-Savo	165,959	17.1	101,753	26.8	3,780	6.9	14,599	-6.9	1,318	-6.1	5,784	-5.3
Pohjois-Savo	128,257	10.1	57,091	5.6	4,576	2.7	14,997	49.6	3,318	-7.8	11,474	24.2
North Karelia	96,726	42.5	55,350	59.2	3,192	36.8	6,876	8.7	1,435	28.1	3,234	85.4
Central Finland	181,737	5.6	58,735	11.0	6,919	-9.5	20,178	-16.6	6,953	-13.3	23,114	0.5
South Ostrobothnia	28,520	-8.4	3,880	-3.0	2,721	-2.3	2,327	14.3	1,029	-22.7	2,887	-0.2
Ostrobothnia	76,484	-1.4	3,193	-3.1	14,606	16.9	6,419	-3.0	2,474	14.7	4,094	-24.1
Central Ostrobothnia	14,119	9.0	540	-70.3	2,257	15.0	3,684	25.5	449	35.6	1,277	-5.6
North Ostrobothnia	269,032	2.4	75,058	7.6	18,164	-2.4	28,621	4.1	21,427	80.8	10,119	14.0
Kainuu	115,024	11.9	71,000	6.9	2,059	0.4	4,328	-3.2	1,643	-8.7	2,882	-33.8
Lapland	995,438	13.5	155,992	37.1	28,889	8.4	129,633	8.8	171,607	16.3	11,163	-7.0
Åland	246,611	-5.4	4,646	-5.0	194,896	-5.1	12,887	1.4	1,508	20.4	6,960	-9.6

Appendix table 7.2. Nights spent by non-residents and annual change (%) in all establishments in 2012

Region	France		United States		Norway		Japan		Netherlands		Italy	
Whole country	217,886	2.0	198,725	-1.6	182,639	5.4	176,919	20.8	164,918	0.2	130,847	-16.4
Mainland Finland	216,988	2.1	197,839	-1.5	179,250	6.3	176,810	20.8	163,614	0.4	130,373	-16.3
Uusimaa	72,667	-0.3	145,453	2.1	62,494	7.5	101,132	11.6	60,355	4.7	62,560	-17.6
Varsinais-Suomi	6,556	-17.1	8,472	-30.8	8,535	17.4	5,908	2.8	5,758	-0.4	5,014	-39.0
Satakunta	4,332	-21.8	4,147	64.6	1,903	17.1	581	82.7	1,362	-44.6	1,327	-9.4
Kanta-Häme	872	5.2	1,841	14.8	2,094	32.3	329	-14.5	562	-19.0	1,458	8.7
Pirkanmaa	7,860	1.3	8,029	-11.4	3,909	-32.0	4,016	-1.8	5,222	3.5	7,655	-30.5
Päijät-Häme	1,608	-8.0	2,131	32.5	1,758	-6.7	498	-10.6	2,063	21.8	1,898	7.2
Kymenlaakso	1,659	4.7	1,167	-78.0	560	-29.4	172	-34.6	1,721	-13.7	1,484	-29.2
South Karelia	1,458	-3.0	1,723	-5.3	357	-32.0	384	-12.9	1,460	-12.9	1,782	-4.5
Etelä-Savo	2,196	9.9	1,033	-8.9	2,530	376.5	449	31.3	3,252	-6.4	2,530	-18.6
Pohjois-Savo	1,986	-4.8	1,501	5.8	1,338	-1.9	402	5.5	2,076	-16.8	2,103	2.6
North Karelia	1,679	30.5	1,007	-10.3	1,011	81.8	702	45.0	2,393	11.6	1,621	16.5
Central Finland	9,116	27.8	5,103	35.3	1,800	-25.9	990	-3.9	5,117	20.5	4,123	9.9
South Ostrobothnia	521	-26.8	798	-13.3	1,014	2.9	434	-32.8	764	-18.0	1,110	-5.1
Ostrobothnia	1,697	7.6	1,965	-2.6	3,888	-13.4	576	51.2	2,940	4.9	2,500	2.4
Central Ostrobothnia	510	104.0	656	92.4	813	83.5	80	25.0	384	-9.0	268	-30.2
North Ostrobothnia	8,009	18.0	4,937	6.6	22,692	-4.6	2,756	-26.3	9,657	-18.1	4,294	3.1
Kainuu	6,666	180.3	866	27.7	1,003	-5.2	1,365	22.1	1,558	-4.0	1,906	27.6
Lapland	87,596	-1.1	7,010	-14.1	61,551	11.2	56,036	56.9	56,970	1.7	26,740	-16.7
Åland	898	-12.0	886	-8.9	3,389	-27.6	109	0.9	1,304	-20.0	474	-34.7

Appendix table 8.1. Nights spent by non-residents and annual change (%) in hotels in 2012

Region / municipality	Foreign countries, total		Russia		Sweden		Germany		United Kingdom		Estonia	
Whole country	4,878,052	5.4	1,233,312	12.8	404,229	-1.5	440,992	-1.3	362,803	6.2	165,832	8.9
Mainland Finland	4,773,652	5.6	1,231,576	12.8	314,506	-0.8	439,029	-1.4	362,310	6.2	163,644	8.9
Uusimaa	2,286,831	2.4	421,382	7.4	168,593	-2.5	195,531	-4.3	155,041	-7.2	78,396	9.9
Espoo	160,457	10.6	43,130	21.8	12,377	-12.9	14,957	20.5	8,817	-9.1	10,927	4.1
Helsinki	1,737,947	0.6	304,794	4.2	124,620	-4.1	150,778	-7.7	120,340	-11.5	39,548	4.5
Vantaa	283,533	8.7	45,754	21.2	22,475	12.5	16,342	3.9	19,762	11.1	18,269	31.4
Varsinais-Suomi	178,970	-7.6	25,962	21.7	36,786	-11.9	15,736	-8.1	9,001	-17.7	8,466	2.4
Turku	133,812	-4.1	20,009	28.8	25,459	-14.2	12,343	-2.1	7,336	-16.4	5,888	-6.2
Satakunta	53,442	-10.6	3,371	35.7	7,708	-9.5	9,828	-39.6	3,605	0.9	2,716	-1.9
Pori	23,491	0.9	2,050	52.2	3,240	20.5	3,630	-31.1	1,144	-21.0	1,490	19.8
Kanta-Häme	49,213	27.8	8,409	9.8	3,725	39.5	4,298	4.1	2,067	48.4	1,807	36.1
Hämeenlinna	35,780	34.9	5,042	7.8	2,286	39.7	2,577	-8.1	1,442	65.0	1,010	41.9
Pirkanmaa	176,944	0.5	26,775	11.6	15,343	1.0	17,686	-0.9	10,306	-13.4	9,826	4.5
Tampere	154,342	4.3	17,303	18.8	13,767	0.2	15,644	2.8	9,364	-15.1	8,362	29.9
Päijät-Häme	88,112	13.2	41,053	27.4	5,054	3.6	6,956	-3.2	2,319	28.1	4,919	9.0
Lahti	49,886	4.2	15,990	21.4	3,740	-1.5	5,216	-15.0	1,517	-0.5	3,823	5.3
Kymenlaakso	76,722	10.7	46,355	25.7	2,700	8.3	4,138	27.8	3,212	11.5	3,578	-11.3
Kouvola	23,671	24.2	12,405	20.1	1,286	11.6	2,665	53.9	630	-4.7	1,303	7.4
South Karelia	283,424	12.5	251,459	15.7	4,126	2.4	3,598	-6.9	1,395	2.9	2,646	-14.6
Lappeenranta	115,524	37.9	94,930	49.8	1,839	-7.3	2,247	1.4	887	5.7	1,676	-13.1
Etelä-Savo	81,460	5.7	53,780	9.9	2,271	-10.6	4,168	-0.3	1,004	-12.5	2,781	-5.5
Mikkeli	38,052	20.1	24,794	24.6	1,244	2.5	2,138	-9.3	434	1.4	1,053	-26.7
Pohjois-Savo	91,806	4.1	40,375	-4.6	4,069	4.1	11,113	50.7	2,945	-8.1	4,828	40.8
Kuopio	48,253	14.1	15,635	6.6	2,917	17.6	5,321	6.1	2,367	14.0	3,446	91.0
North Karelia	69,921	38.4	40,880	48.5	2,487	39.7	3,882	18.9	1,217	17.2	2,580	96.2
Joensuu	45,838	40.1	23,641	39.6	2,092	49.9	3,039	27.1	936	40.3	919	15.3
Central Finland	164,645	8.2	50,742	8.0	6,418	-9.0	18,642	-15.2	6,717	-8.4	21,483	5.0
Jyväskylä	83,013	13.8	12,278	16.0	4,579	-7.4	10,829	-18.5	6,079	-7.7	3,321	47.2
South Ostrobothnia	21,228	-3.7	2,129	-22.5	2,170	-3.8	1,662	-2.8	1,008	-21.1	2,087	28.5
Seinäjoki	10,714	-21.0	421	-35.3	1,383	-9.0	1,115	2.3	686	-35.2	1,375	59.7
Ostrobothnia	69,909	2.7	2,791	9.2	12,820	32.5	5,484	-0.8	2,429	15.0	3,185	-20.1
Vaasa	54,047	-2.4	2,403	14.5	7,458	10.2	3,341	-10.5	2,185	21.6	2,337	-9.0
Central Ostrobothnia	10,586	7.0	366	-77.3	1,777	12.6	3,063	17.8	320	6.0	967	48.3
Kokkola	9,296	19.6	241	-33.1	1,485	14.0	2,965	17.6	264	15.8	555	0.7
North Ostrobothnia	183,138	3.0	41,274	-0.1	13,759	-0.2	23,094	4.2	16,988	73.1	5,848	26.4
Kuusamo	58,614	10.2	27,072	-4.6	505	-9.7	7,010	7.8	7,659	178.7	612	64.5
Oulu	93,443	1.9	11,966	12.8	11,537	8.7	10,111	0.8	4,261	-2.8	3,896	25.5
Kainuu	89,651	21.1	54,847	14.4	1,677	-0.2	2,661	-2.6	1,610	-5.6	1,996	53.7
Kajaani	10,603	15.0	4,373	16.0	593	-14.7	902	8.4	286	53.8	1,015	72.0
Lapland	797,650	14.0	119,626	24.9	23,023	12.1	107,489	7.7	141,126	25.7	5,535	6.2
Rovaniemi	238,091	2.1	55,163	17.2	5,219	-5.4	26,862	-19.4	18,449	5.4	2,246	-20.5
Åland	104,400	-4.4	1,736	31.5	89,723	-3.7	1,963	20.1	493	-17.6	2,188	7.9
Maarianhamina	69,892	-2.8	1,664	49.2	57,685	-1.8	1,489	30.8	461	-17.7	1,308	65.6

Appendix table 8.2. Nights spent by non-residents and annual change (%) in hotels in 2012

Region / municipality	United States		Norway		Netherlands		Italy		France		Japan	
Whole country	192,717	-1.0	142,216	9.9	129,435	-0.1	115,344	-15.6	189,695	2.5	171,111	21.5
Mainland Finland	192,044	-1.0	140,335	10.7	129,181	-0.1	115,097	-15.7	189,358	2.5	171,002	21.5
Uusimaa	143,454	2.7	60,742	7.4	55,889	4.7	60,214	-16.7	66,621	-0.0	98,565	12.0
Espoo	5,421	18.1	3,270	3.5	3,754	28.0	2,827	7.1	3,273	2.5	924	12.8
Helsinki	117,968	1.8	48,949	4.9	44,210	5.3	49,928	-15.7	55,130	-1.7	87,071	12.3
Vantaa	17,458	5.6	6,191	48.5	5,798	-3.4	4,721	-7.9	6,249	11.1	9,960	8.0
Varsinais-Suomi	7,680	-34.0	7,563	15.6	3,731	-10.3	4,171	-42.4	4,693	-8.2	5,568	6.1
Turku	5,237	-8.2	5,557	24.2	3,012	-15.6	3,785	-42.3	3,925	1.3	1,980	-1.6
Satakunta	4,110	68.2	1,660	14.9	1,058	-49.6	1,200	-9.2	4,246	-22.3	560	83.0
Pori	2,519	87.1	645	96.6	469	-62.8	482	-4.6	749	-31.3	203	66.4
Kanta-Häme	1,757	14.2	2,057	34.6	451	-23.6	1,376	7.6	793	5.2	317	-14.3
Hämeenlinna	1,374	33.3	1,691	29.2	347	-13.9	468	-6.6	482	-17.3	297	35.6
Pirkanmaa	7,325	-11.2	3,296	-30.0	4,289	13.8	6,157	-23.1	6,304	10.7	3,484	-4.2
Tampere	6,719	-10.1	2,977	-27.4	3,925	18.4	5,688	-23.2	5,810	15.2	3,435	-2.6
Päijät-Häme	2,030	32.2	1,626	-9.7	1,752	45.2	1,690	0.1	1,418	-5.1	493	-9.9
Lahti	1,169	16.1	1,237	-8.6	1,424	41.4	1,086	-24.1	1,052	-2.7	430	-12.1
Kymenlaakso	1,134	-77.4	509	-32.7	1,390	-6.6	1,454	-5.3	1,069	-18.1	155	-36.7
Kouvola	503	43.3	266	-15.3	224	9.3	682	139.3	391	-10.9	45	-15.1
South Karelia	1,673	-4.9	334	-35.3	982	-27.1	1,598	-5.7	1,189	-0.2	381	-7.7
Lappeenranta	648	20.0	199	-32.8	671	-29.3	1,019	2.6	676	3.7	215	102.8
Etelä-Savo	914	-13.2	2,358	540.8	802	-23.7	1,081	-34.5	911	-7.7	259	1.6
Mikkeli	287	-17.5	270	27.4	455	-0.7	378	-45.4	382	1.9	76	105.4
Pohjois-Savo	1,443	9.0	874	-4.8	1,457	-22.0	1,432	-0.9	1,275	-6.3	350	5.1
Kuopio	1,098	17.7	550	5.2	991	-27.9	961	4.3	1,068	10.3	237	-11.6
North Karelia	925	-14.4	918	87.7	1,298	1.2	1,533	34.9	1,290	33.7	676	41.4
Joensuu	699	-30.8	859	121.4	616	19.8	1,284	44.8	994	49.5	545	38.3
Central Finland	4,916	36.6	1,744	-23.3	4,833	29.9	3,877	12.4	8,602	26.3	917	-2.0
Jyväskylä	3,533	37.7	1,395	-19.1	2,440	40.0	3,379	27.8	4,093	25.4	862	-1.5
South Ostrobothnia	737	-15.5	711	-13.4	596	-21.2	1,077	-6.8	459	2.5	408	-36.5
Seinäjoki	476	-39.8	340	21.0	457	-23.7	450	-45.3	263	-28.1	188	-54.4
Ostrobothnia	1,869	7.8	2,950	4.2	2,606	2.2	2,436	4.1	1,595	10.7	576	51.2
Vaasa	1,534	-2.5	2,511	2.4	2,047	22.9	1,883	-2.3	1,269	-4.6	538	44.6
Central Ostrobothnia	648	96.4	518	51.5	347	-0.3	212	-22.3	357	138.0	40	-33.3
Kokkola	605	110.1	448	36.2	346	0.0	169	-27.2	341	140.1	40	-32.2
North Ostrobothnia	4,313	-1.0	9,178	27.1	6,747	-21.2	3,482	12.2	6,085	11.1	2,394	-22.0
Kuusamo	382	-32.9	452	62.6	2,330	-27.1	829	28.9	1,391	232.8	663	31.0
Oulu	3,725	3.6	8,236	26.5	1,606	-12.8	2,053	-1.8	3,119	-13.0	1,563	-27.6
Kainuu	859	30.9	906	0.3	584	4.1	1,302	20.4	5,749	300.9	1,359	21.9
Kajaani	209	18.1	255	27.5	153	71.9	341	72.2	148	-52.3	38	-25.5
Lapland	6,257	-13.3	42,391	15.3	40,369	-0.4	20,805	-19.3	76,702	-1.7	54,500	56.8
Rovaniemi	1,947	-22.9	9,795	4.8	6,170	-1.4	13,412	-23.5	17,047	-7.2	17,307	44.1
Åland	673	-7.4	1,881	-28.4	254	-9.3	247	18.8	337	-1.5	109	41.6
Maarianhamina	641	-5.7	1,624	-33.3	243	-1.2	245	25.0	289	-2.0	109	41.6

Appendix table 9.1. Capacity of accommodation establishments and capacity utilization by type of establishment in 2012

Whole year on average	Number of establishments	Number of rooms	Number of bed-places	Occupancy rate of bedrooms, %	Change of room occupancy rate, %-units	Room price, euros (incl. VAT 9 %)
All accommodation establishments	1,124	59,776	144,622	49.1	-1.3	90.20
Hotels	635	50,611	109,710	52.6	-0.5	90.96
Similar establishments	120	2,434	6,164	23.6	-2.2	48.46
Holiday villages	238	4,968	21,490	30.9	-10.0	87.34
Camping sites	131	1,764	7,259	32.9	-2.7	..
Youth hostels	38	703	2,160	30.6	-3.4	63.22

Appendix table 9.2. Capacity of accommodation establishments and capacity utilization by type of establishment, May-August 2012

May-August on average	Number of establishments	Number of rooms	Number of bed-places	Occupancy rate of bedrooms, %	Change of room occupancy rate, %-units	Room price, euros (incl. VAT 9 %)
All accommodation establishments	1,280	63,880	157,069	51.9	-2.0	88.85
Hotels	651	51,692	112,253	56.3	-1.5	90.12
Similar establishments	141	3,020	7,502	30.0	5.5	49.12
Holiday villages	274	5,798	24,151	31.5	-10.2	73.74
Camping sites	215	3,370	13,163	36.2	-3.6	..
Youth hostels	49	1,007	2,849	31.0	-12.2	64.75

Appendix table 10.1. Capacity of accommodation establishments by type of establishment in 2012

	Establishments	Rooms	Bed-places	Caravan places
All accommodation establishments	1,427	66,418	161,632	21,261
Hotels	682	53,672	116,065	2,216
Residential hotel	36	1,420	4,084	45
Conference hotel	97	17,824	33,629	16
Spa	45	6,003	13,335	385
Holiday resort	170	7,655	18,081	936
Urban hotel	208	13,278	25,697	217
Other hotel	126	7,492	21,239	617
Similar establishments	157	3,337	7,914	609
Holiday villages	286	5,158	22,451	1,671
Camping sites	246	3,091	12,138	16,652
Youth hostels	56	1,160	3,064	113

Appendix table 10.2. Capacity of accommodation establishments by opening season in 2012

		Establishments	Rooms	Bed-places	Caravan places
All accommodation establishments	Total	1,427	66,418	161,632	21,261
	Open year-round	1,073	58,648	139,435	12,394
	Open part of the year	354	7,770	22,197	8,867
Hotels	Total	682	53,672	116,065	2,216
	Open year-round	637	51,341	111,069	2,035
	Open part of the year	45	2,331	4,996	181
Similar establishments	Total	157	3,337	7,914	609
	Open year-round	112	2,041	5,268	487
	Open part of the year	45	1,296	2,646	122
Holiday villages	Total	286	5,158	22,451	1,671
	Open year-round	210	4,017	18,043	1,114
	Open part of the year	76	1,141	4,408	557
Camping sites	Total	246	3,091	12,138	16,652
	Open year-round	81	718	3,335	8,732
	Open part of the year	165	2,373	8,803	7,920
Youth hostels	Total	56	1,160	3,064	113
	Open year-round	33	531	1,720	26
	Open part of the year	23	629	1,344	87

Appendix table 10.3. Capacity of accommodation establishments by number of bed-places in 2012

		Establishments	Rooms	Bed-places	Caravan places
All accommodation establishments	Total	1,427	66,418	161,632	21,261
	0 - 49	589	6,565	17,447	11,774
	50 - 99	387	9,640	26,595	4,305
	100 - 249	283	19,087	44,367	3,560
	250 -	168	31,126	73,223	1,622
Hotels	Total	682	53,672	116,065	2,216
	0 - 49	165	2,734	5,589	327
	50 - 99	158	5,229	11,308	522
	100 - 249	212	16,445	34,001	960
	250 -	147	29,264	65,167	407
Similar establishments	Total	157	3,337	7,914	609
	0 - 49	97	1,333	3,096	319
	50 - 99	49	1,314	3,308	258
	100 -	11	690	1,510	32
Holiday villages	Total	286	5,158	22,451	1,671
	0 - 49	145	1,241	4,533	584
	50 - 99	89	1,371	5,796	379
	100 -	52	2,546	12,122	708
Camping sites	Total	246	3,091	12,138	16,652
	0 - 49	152	978	3,488	10,530
	50 - 99	71	1,198	4,825	3,075
	100 -	23	915	3,825	3,047
Youth hostels	Total	56	1,160	3,064	113
	0 - 49	30	279	741	14
	50 - 99	20	528	1,358	71
	100 -	6	353	965	28

Appendix table 10.4. Capacity of accommodation establishments by number of rooms in 2012

		Establishments	Rooms	Bed-places	Caravan places
All accommodation establishments	Total	1,427	66,418	161,632	21,261
	0 - 19	680	7,185	25,528	14,545
	20 - 49	377	11,408	30,922	4,178
	50 - 99	182	13,218	30,913	2,011
	100 -	188	34,607	74,269	527
Hotels	Total	682	53,672	116,065	2,216
	0 - 19	126	1,734	4,362	336
	20 - 49	220	6,943	16,115	719
	50 - 99	156	11,488	24,960	732
	100 -	180	33,507	70,628	429
Similar establishments	Total	157	3,337	7,914	609
	0 - 19	94	1,166	3,264	299
	20 - 49	56	1,596	3,780	306
	50 -	7	575	870	4
Holiday villages	Total	286	5,158	22,451	1,671
	0 - 19	217	2,126	9,547	829
	20 - 49	51	1,471	6,278	625
	50 -	18	1,561	6,626	217
Camping sites	Total	246	3,091	12,138	16,652
	0 - 19	209	1,830	7,288	13,042
	20 - 49	32	889	3,359	2,504
	50 -	5	372	1,491	1,106
Youth hostels	Total	56	1,160	3,064	113
	0 - 19	34	329	1,067	39
	20 - 49	18	509	1,390	24
	50 -	4	322	607	50

Suomen virallinen tilasto
Finlands officiella statistik
Official Statistics of Finland

Transport and Tourism 2013

Inquiries

Marjut Tuominen 09 1734 3556

Ossi Nurmi 09 1734 2984

Director in charge:

Hannele Orjala

liikenne.matkailu@stat.fi

www.stat.fi

Source: Accommodation Statistics. Statistics Finland