

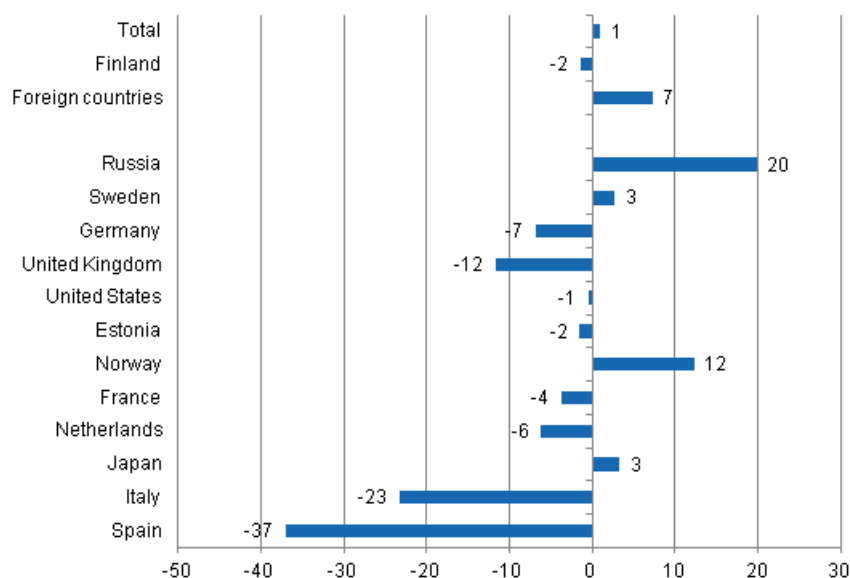
# Accommodation statistics

2012, May

## Nights spent by foreign tourists in Finland up by 7 per cent in May 2012

The number of recorded nights spent by foreign tourists at Finnish accommodation establishments in May 2012 was 389,000, which was 7 per cent higher than one year earlier. By contrast, the number of nights spent by resident tourists at accommodation establishments decreased by 1.5 per cent and totalled 952,000 in May 2012. The total number of overnight stays increased by one per cent and altogether good 1.3 million overnight stays were recorded at accommodation establishments. These figures are preliminary data from Statistics Finland's statistics on accommodation establishments and they have been collected from accommodation establishments with at least 20 beds or caravan pitches with electricity connection, and youth hostels.

### Change in overnight stays in May 2012/2011, %

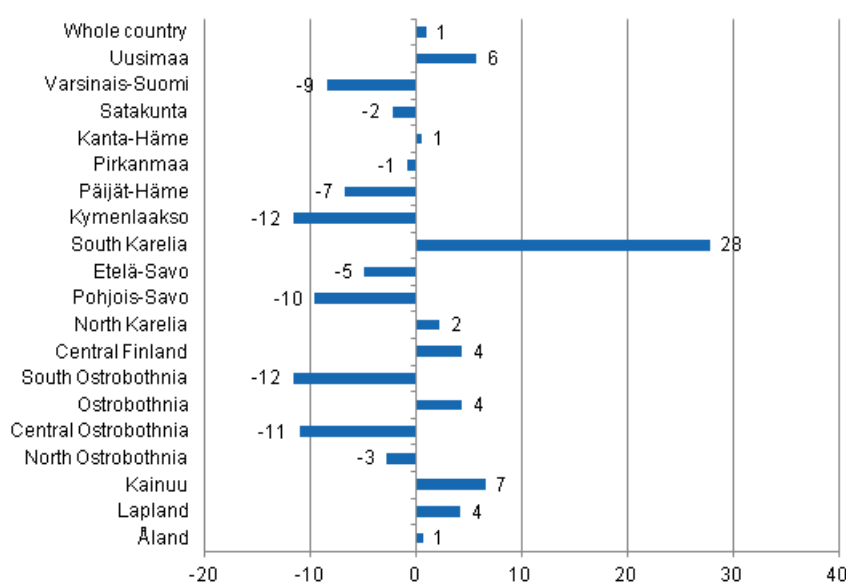


The growth in the number of nights spent by Russian visitors continued in May 2012. Overnight stays recorded for them at accommodation establishments in Finland numbered nearly 81,000, which was one-fifth up on May 2011. Swedish and German visitors came next. Swedish visitors spent 46,500 nights

which was 3 per cent more than one year earlier. By contrast, overnight stays recorded for German visitors decreased by 7 per cent and totalled 31,500 in May 2012. Accommodation establishments recorded nearly 20,000 overnight stays for visitors from both Britain and the United States. Overnight stays by British visitors decreased by 12 per cent while those by visitors from the United States remained almost on level with last year's May. By contrast, nights spent by Norwegian visitors increased by 12 per cent and those by Japanese visitors by 3 per cent. The Mediterranean countries accounted for the biggest decreases in overnight stays. Overnight stays recorded for Spanish visitors decreased by 37 per cent and those for Italian visitors by 23 per cent from the year before. Smaller changes took place in the nights spent by visitors from the other most important countries of inbound tourism to Finland.

By region, the total number of overnight stays increased most in South Karelia, up by 28 per cent in May. In Kainuu, the growth in the number of nights spent was 7 per cent and in Uusimaa 6 per cent. In Central Finland, Ostrobothnia and Lapland the number of recorded overnight stays was 4 per cent up on May 2011. Overnight stays decreased most in South Ostrobothnia and Kymenlaakso, by 12 per cent in both. In Central Ostrobothnia the number of recorded overnight stays was 11 per cent down and in Pohjois-Savo 10 per cent down on May 2011. Overnight stays in the whole country increased by one per cent from the previous year.

### Change in overnight stays in May by region 2012 / 2011, %



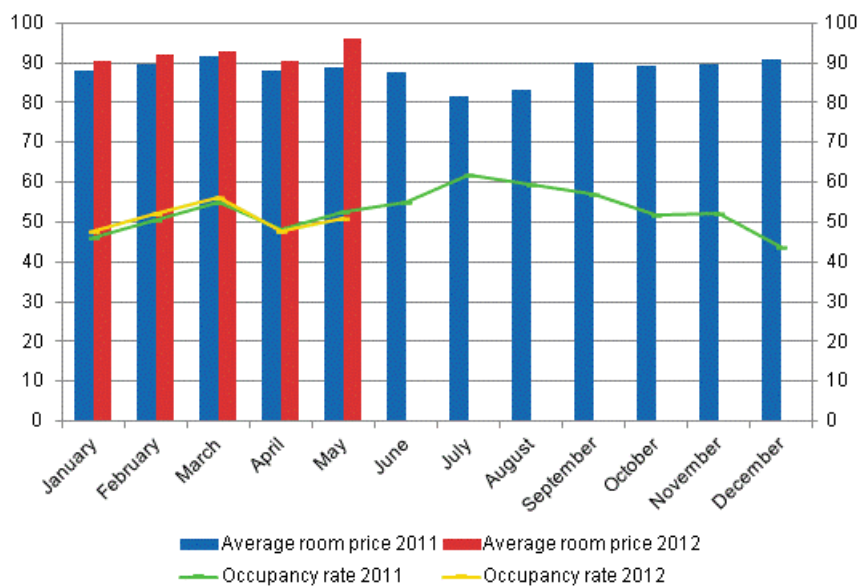
### *Nights spent in hotels increased by one per cent in May 2012*

The total number of nights spent in hotels was good 1.1 million in May 2012, which was one per cent higher than twelve months earlier. Overnight stays by foreign tourists increased by 6 per cent and hotels recorded a total of 346,000 of them. Recorded nights spent by resident tourists in hotels numbered 807,000. The number was almost the same as in May 2011.

The occupancy rate of hotel rooms was 50.9 per cent in May. One year earlier, it was 52.5 per cent. Among the regions, the highest occupancy rates of hotel rooms were measured in Uusimaa, 69.2 per cent, and South Karelia, 55.5 per cent. In Lappeenranta, the hotel room occupancy rate was 66.5 per cent and in Vantaa 73.2 per cent. Hotel room occupancy rate in Helsinki was 75.4 per cent.

In May, the realised average price of a hotel room was EUR 96.10 per day for the whole country. Twelve months previously it was EUR 88.88.

### Hotel room occupancy rate and the monthly average price

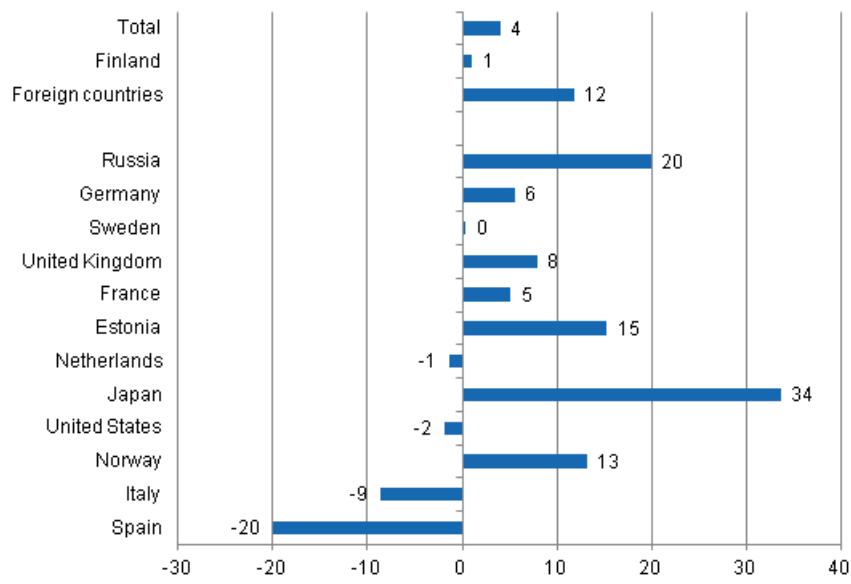


### *Total number of nights spent at all accommodation establishments grew by 4 per cent in the January to May 2012 period*

Over the January-May period of 2012, the number of nights spent at accommodation establishments in Finland totalled 7.3 million, which was 4 per cent more than in the same period of last year. Overnight stays by foreign tourists went up by 12 per cent and accommodation establishments recorded a total of 2.2 million of them. Overnight stays by resident tourists numbered 5.1 million, which was one per cent more than in January-May 2011.

Overnight stays recorded at Finnish accommodation establishments for Russian visitors in January-May numbered 672,000, which was one-fifth up on the same period one year earlier. German and Swedish visitors came next. Overnight stays by German visitors increased by 5.5 per cent and numbered 178,000. Night spent by visitors from Sweden at Finnish accommodation establishments numbered 160,000, which was almost the same as in the same period of the previous year. Overnight stays by British visitors numbered 158,000, which was 8 per cent more than in January-May 2011. The number of nights spent by French visitors was 109,000, which was 5 per cent higher than twelve months earlier. The number of nights spent by Estonian visitors rose to 96,000, which was 15 per cent up on January-May 2011. However, the biggest increase of 34 per cent was recorded in overnight stays by Japanese visitors, who spent 65,000 nights at Finnish accommodation establishments.

### Change in overnight stays in January-May 2012/2011, %



# Contents

## Tables

### Appendix tables

Appendix table 1. Capacity and its utilization, May 2012.....	6
Appendix table 2. Nights spend in all establishments, May 2012.....	7
Appendix table 3. Hotel capacity and capacity utilization, May 2012.....	8
Appendix table 4. Nights spend in hotels, May 2012.....	9
Appendix table 5. Visitor arrivals and nights spend by country of residence, May 2012.....	10
Appendix table 6. Nights spend in all establishments, 2012.....	10

## Appendix tables

**Appendix table 1. Capacity and its utilization, May 2012**

Region / municipality	Number of establishments	Number of bedrooms	Occupancy rate of bedrooms %	Change of the occupancy rate compared to previous year, %-units	Average price of nights spend, in euros (incl. VAT 9 %)
Whole country	1 127	58 915	45,9	-2,0	61,01
Mainland Finland	1 059	57 379	46,2	-2,0	61,18
Uusimaa	147	14 844	68,2	-0,1	78,32
Helsinki	58	8 555	75,2	1,2	85,44
Varsinais-Suomi	78	3 971	45,8	-9,8	51,03
Turku	24	2 222	52,7	-14,9	52,05
Satakunta	40	1 553	44,8	-5,8	57,06
Pori	11	758	44,3	-8,0	55,16
Kanta-Häme	31	1 465	42,1	-0,4	49,20
Hämeenlinna	13	808	44,9	-2,0	51,46
Pirkanmaa	74	4 542	48,2	-3,0	54,14
Tampere	29	2 931	59,6	-3,1	60,86
Päijät-Häme	29	1 920	43,7	-0,4	52,13
Lahti	10	723	52,3	0,6	58,14
Kymenlaakso	26	1 178	40,4	-4,1	48,37
Kouvola	10	573	41,5	-1,4	45,41
South Karelia	36	1 889	49,9	-4,7	50,79
Lappeenranta	14	946	63,0	-0,1	49,66
Etelä-Savo	59	2 281	31,0	-6,9	41,33
Mikkeli	9	570	44,0	-8,6	53,62
Pohjois-Savo	48	2 686	41,6	-6,8	52,60
Kuopio	16	1 237	54,1	-8,5	58,62
North Karelia	52	1 701	33,2	-0,5	48,71
Joensuu	12	781	45,3	0,2	58,35
Central Finland	51	2 916	42,2	1,9	49,86
Jyväskylä	15	1 410	50,1	-3,9	64,32
South Ostrobothnia	43	1 746	36,8	-9,1	42,43
Seinäjoki	9	618	48,0	-16,2	56,87
Ostrobothnia	31	1 382	46,9	2,7	55,33
Vaasa	9	833	52,2	3,1	61,75
Central Ostrobothnia	17	588	40,8	-4,1	56,71
Kokkola	9	415	48,1	-8,5	61,53
North Ostrobothnia	94	4 120	37,6	-1,7	52,23
Oulu	11	1 458	60,7	-4,3	64,21
Kainuu	43	2 094	32,8	1,9	40,41
Kajaani	7	434	35,5	4,0	57,86
Lapland	160	6 503	18,7	0,3	43,24
Rovaniemi	18	1 371	29,5	-2,1	39,81
Åland	68	1 536	33,6	-2,9	.
Maarianhamina	13	633	50,2	-2,7	.

**Appendix table 2. Nights spend in all establishments, May 2012**

Region / municipality	Nights spend, total	Change of nights spend, total, %	Nights spend, residents	Change of nights spend, residents, %	Nights spend, non-residents	Change of nights spend, non-residents, %
Whole country	1 341 471	0,9	952 124	-1,5	389 347	7,2
Mainland Finland	1 302 386	0,9	932 567	-1,6	369 819	7,8
Uusimaa	468 080	5,7	248 256	3,0	219 824	9,0
Helsinki	298 237	5,8	132 437	3,3	165 800	7,8
Varsinais-Suomi	90 320	-8,5	74 182	-6,7	16 138	-16,1
Turku	55 576	-10,7	44 098	-7,2	11 478	-22,0
Satakunta	32 642	-2,3	25 970	0,5	6 672	-11,7
Pori	15 228	-1,4	12 858	2,4	2 370	-17,8
Kanta-Häme	33 651	0,5	28 846	-5,1	4 805	55,9
Hämeenlinna	19 258	-3,5	15 987	-10,7	3 271	59,9
Pirkanmaa	109 712	-0,8	91 241	-0,1	18 471	-3,9
Tampere	77 059	4,0	61 449	5,4	15 610	-1,2
Päijät-Häme	46 766	-6,8	39 317	-11,1	7 449	24,9
Lahti	16 977	-3,9	11 916	-8,9	5 061	10,2
Kymenlaakso	27 222	-11,7	20 020	-18,1	7 202	12,6
Kouvola	12 260	-24,7	10 308	-29,7	1 952	20,2
South Karelia	49 606	27,8	26 964	32,1	22 642	23,0
Lappeenranta	28 785	68,9	19 388	81,3	9 397	48,0
Etelä-Savo	38 887	-4,9	29 869	-11,5	9 018	26,0
Mikkeli	12 120	-9,1	9 510	-16,7	2 610	37,0
Pohjois-Savo	52 647	-9,6	46 363	-12,5	6 284	20,1
Kuopio	30 587	-6,7	26 520	-11,3	4 067	41,2
North Karelia	29 428	2,2	24 852	-1,8	4 576	30,6
Joensuu	14 958	1,3	12 084	-1,5	2 874	15,0
Central Finland	63 949	4,3	57 524	6,6	6 425	-12,4
Jyväskylä	30 448	-4,4	25 666	-4,4	4 782	-4,0
South Ostrobothnia	41 614	-11,7	39 957	-11,4	1 657	-19,2
Seinäjoki	15 065	-11,6	13 965	-10,7	1 100	-21,5
Ostrobothnia	29 324	4,3	22 601	3,4	6 723	7,6
Vaasa	18 107	-0,6	13 115	0,3	4 992	-2,9
Central Ostrobothnia	11 687	-11,0	10 795	-9,0	892	-30,0
Kokkola	8 254	-17,8	7 476	-16,4	778	-29,0
North Ostrobothnia	78 835	-2,8	67 558	-1,8	11 277	-8,1
Oulu	42 494	-4,1	35 320	-2,0	7 174	-13,3
Kainuu	42 572	6,5	39 506	6,8	3 066	2,3
Kajaani	6 377	-4,7	5 570	-9,5	807	50,8
Lapland	55 444	4,2	38 746	-2,7	16 698	24,7
Rovaniemi	21 500	-1,5	13 377	-10,8	8 123	18,9
Åland	39 085	0,6	19 557	4,9	19 528	-3,5
Maarianhamina	18 707	-1,9	10 920	2,1	7 787	-7,1

**Appendix table 3. Hotel capacity and capacity utilization, May 2012**

Region / municipality	Number of establishments	Number of bedrooms	Occupancy rate of bedrooms %	Change of the occupancy rate compared to previous year, %-units	Room price, euros (Vat inc. 9 %)	<sup>1)</sup> RevPAR, euros (Vat inc. 9 %)
Whole country	621	49 510	50,9	-1,6	96,10	48,89
Mainland Finland	606	48 706	51,0	-1,5	96,07	49,01
Uusimaa	118	14 342	69,2	-0,3	114,97	79,57
Helsinki	52	8 437	75,4	0,9	124,93	94,15
Varsinais-Suomi	38	3 117	52,9	-8,7	80,97	42,82
Turku	18	2 046	55,2	-13,4	80,11	44,19
Satakunta	24	1 201	51,5	-8,2	83,40	42,93
Pori	8	650	47,7	-9,3	81,75	39,02
Kanta-Häme	18	1 225	44,9	-0,0	83,59	37,57
Hämeenlinna	8	721	47,5	-1,8	87,31	41,44
Pirkanmaa	43	3 712	52,4	-2,4	91,01	47,73
Tampere	23	2 638	61,3	-2,4	94,35	57,87
Päijät-Häme	16	1 731	45,8	-0,3	81,84	37,51
Lahti	7	678	53,1	1,7	83,36	44,28
Kymenlaakso	16	961	43,3	-2,2	82,59	35,74
Kouvola	6	435	46,8	4,4	81,34	38,09
South Karelia	18	1 420	55,5	-3,1	91,91	50,98
Lappeenranta	7	716	66,5	-1,7	84,69	56,36
Etelä-Savo	28	1 712	35,9	-9,2	70,78	25,44
Mikkeli	6	504	48,5	-12,1	82,61	40,04
Pohjois-Savo	29	2 296	45,6	-7,9	83,25	37,93
Kuopio	10	1 066	58,6	-10,8	89,65	52,52
North Karelia	25	1 340	38,6	0,3	79,43	30,69
Joensuu	10	750	47,0	1,5	79,53	37,39
Central Finland	27	2 543	45,5	2,1	84,37	38,36
Jyväskylä	10	1 302	52,9	-3,8	90,96	48,08
South Ostrobothnia	25	1 454	42,7	-10,6	72,23	30,81
Seinäjoki	8	618	48,0	-16,2	77,61	37,28
Ostrobothnia	21	1 224	50,2	2,5	82,25	41,30
Vaasa	8	802	52,8	2,8	84,88	44,83
Central Ostrobothnia	10	511	44,1	-5,4	77,72	34,27
Kokkola	5	367	50,7	-9,6	80,50	40,83
North Ostrobothnia	47	3 286	42,9	-1,0	84,60	36,27
Oulu	10	1 430	60,6	-4,3	92,08	55,79
Kainuu	22	1 635	38,8	3,0	63,66	24,70
Kajaani	6	387	38,4	4,2	78,91	30,30
Lapland	81	4 996	21,8	1,6	69,28	15,13
Rovaniemi	12	1 234	30,9	-1,0	66,80	20,61
Åland	15	804	42,3	-5,2	.	.
Maarianhamina	7	501	53,7	-3,5	.	.

1) RevPar = Average revenue per available room, equivalent to the accommodation revenue of an establishment divided by the available room capacity.



**Appendix table 4. Nights spend in hotels, May 2012**

Region / municipality	Nights spend, total	Change of nights spend, total, %	Nights spend, residents	Change of nights spend, residents, %	Nights spend, non-residents	Change of nights spend, non-residents, %
Whole country	1 153 052	1,2	806 769	-0,7	346 283	6,0
Mainland Finland	1 132 884	1,3	796 187	-0,8	336 697	6,5
Uusimaa	441 455	5,8	229 977	2,7	211 478	9,3
Helsinki	282 990	5,9	124 061	3,3	158 929	7,9
Varsinais-Suomi	77 036	-9,5	63 722	-6,8	13 314	-20,6
Turku	52 949	-11,3	42 467	-8,1	10 482	-22,1
Satakunta	25 137	-4,9	18 790	-1,5	6 347	-13,7
Pori	12 844	-1,1	10 563	4,2	2 281	-20,1
Kanta-Häme	26 898	1,9	22 238	-5,1	4 660	57,2
Hämeenlinna	16 140	-3,0	12 882	-11,7	3 258	59,2
Pirkanmaa	89 130	2,2	73 849	3,5	15 281	-3,7
Tampere	70 398	7,3	56 462	9,8	13 936	-1,6
Päijät-Häme	39 968	-6,6	33 419	-11,0	6 549	24,7
Lahti	15 768	-5,2	11 101	-10,2	4 667	9,5
Kymenlaakso	19 275	2,8	13 403	-1,1	5 872	13,0
Kouvola	9 058	10,8	7 198	5,4	1 860	38,0
South Karelia	42 823	19,9	23 043	28,1	19 780	11,5
Lappeenranta	24 230	52,9	16 639	67,6	7 591	28,3
Etelä-Savo	29 951	-7,7	24 699	-13,0	5 252	29,3
Mikkeli	11 641	-7,2	9 108	-15,8	2 533	46,8
Pohjois-Savo	46 264	-13,8	42 004	-14,7	4 260	-3,1
Kuopio	26 647	-11,4	23 642	-13,9	3 005	15,2
North Karelia	25 128	2,0	21 464	-1,1	3 664	25,1
Joensuu	14 789	0,6	11 982	-1,9	2 807	12,6
Central Finland	58 073	3,2	51 901	5,0	6 172	-10,0
Jyväskylä	28 989	-3,5	24 299	-4,1	4 690	-0,1
South Ostrobothnia	31 780	-7,9	30 181	-7,2	1 599	-20,2
Seinäjoki	12 560	-13,7	11 460	-12,8	1 100	-21,5
Ostrobothnia	25 707	1,8	19 091	-0,2	6 616	7,9
Vaasa	17 720	-0,8	12 768	0,2	4 952	-3,1
Central Ostrobothnia	9 250	-11,9	8 579	-8,5	671	-39,9
Kokkola	7 244	-18,0	6 687	-15,2	557	-41,0
North Ostrobothnia	63 101	-2,7	54 044	-1,0	9 057	-11,5
Oulu	38 262	-4,8	32 196	-2,5	6 066	-15,2
Kainuu	38 159	8,8	35 437	9,2	2 722	3,9
Kajaani	6 121	-6,5	5 319	-11,6	802	52,2
Lapland	43 749	5,1	30 346	-0,4	13 403	20,1
Rovaniemi	19 010	-0,2	12 056	-6,2	6 954	12,3
Åland	20 168	-2,1	10 582	3,4	9 586	-7,4
Maarianhamina	14 637	-2,5	8 261	2,8	6 376	-8,5

**Appendix table 5. Visitor arrivals and nights spend by country of residence, May 2012**

Country of residence	Visitor arrivals in all accommodation establishments	Nights spend in all accommodation establishments	Change of nights spend in all accommodation establishments, %	Nights spend in hotels	Change of nights spend in hotels, %
Total	757 529	1 341 471	0,9	1 153 052	1,2
Finland	555 687	952 124	-1,5	806 769	-0,7
Foreign countries	201 842	389 347	7,2	346 283	6,0
Sweden	27 564	46 587	2,7	39 330	3,5
Germany	17 175	31 537	-6,9	27 994	-7,7
Russia	46 197	80 839	19,9	68 784	15,1
United Kingdom	10 632	19 860	-11,7	19 454	-10,5
United States	8 338	19 276	-0,5	18 816	-0,0
Norway	6 188	10 947	12,4	9 939	11,3
Netherlands	5 000	9 518	-6,2	7 774	-12,1
Italy	3 447	7 499	-23,3	6 953	-25,9
France	5 004	10 835	-3,8	9 592	-5,0
Japan	4 687	8 466	3,3	8 234	2,5
Estonia	6 339	15 832	-1,6	10 922	-2,6
Spain	2 430	4 808	-37,0	4 536	-37,3

**Appendix table 6. Nights spend in all establishments, 2012**

Month	Nights spend, total	Change of nights spend, total, %	Nights spend, residents	Change of nights spend, residents, %	Nights spend, non-residents	Change of nights spend, non-residents, %
Total	7 341 794	4,0	5 135 351	1,0	2 206 443	11,8
January	1 402 774	6,6	785 836	1,0	616 938	14,7
February	1 460 021	8,8	1 028 493	3,7	431 528	23,1
March	1 741 839	4,1	1 291 339	2,9	450 500	7,5
April	1 395 689	-0,1	1 077 559	-1,6	318 130	5,0
May	1 341 471	0,9	952 124	-1,5	389 347	7,2

---

Suomen virallinen tilasto  
Finlands officiella statistik  
Official Statistics of Finland

Transport and Tourism 2012

### Inquiries

Marjut Tuominen 09 1734 3556

Merja Rönkä 09 1734 3209

Director in charge:

Hannele Orjala

[liikenne.matkailu@stat.fi](mailto:liikenne.matkailu@stat.fi)

[www.stat.fi](http://www.stat.fi)

Source: Accommodation Statistics 2012. Statistics Finland