

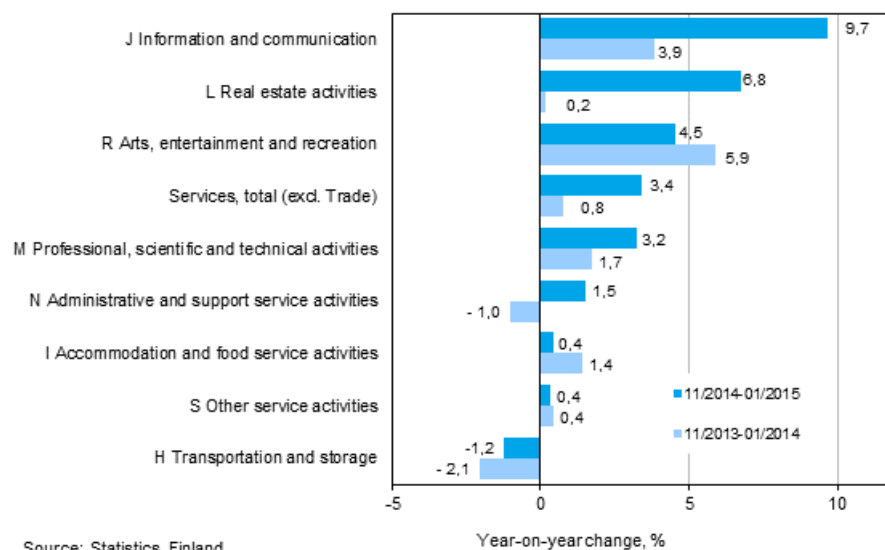
Turnover in service industries

2015, January

Turnover in service industries grew by 3.4 per cent year-on-year in November to January

According to Statistics Finland, turnover in service industries grew by 3.4 per cent in November to January from the corresponding time period of the year before. One year previously, turnover grew by 0.8 per cent. Services are here examined exclusive of trade.

Three months' year-on-year change in turnover in services (TOL 2008)



In November to January, turnover in service industries still grew fastest in information and communication activities and in real estate activities. In information and communication activities, turnover grew by 9.7 per cent in November to January, and in real estate activities by 6.8 per cent from one year ago. In arts, entertainment and recreation turnover grew by 4.5 per cent and in professional, scientific and technical activities by 3.2 per cent.

Turnover development was still weakest in transportation and storage enterprises, where the drop from one year ago was 1.2 per cent.

New seasonal adjustment software adopted

Starting from the January 2015 data, a new seasonal adjustment software J-Demetra+ will be adopted in the indices of turnover. The software change does not affect the used seasonal adjustment method. The change does not influence the interpretation or use of the time series either. More about the implementation of the software [Changes in these statistics](#).

Contents

Tables

Appendix tables

Appendix table 1. Year-on-year change in turnover by industry, % (TOL 2008).....	4
--	---

Figures

Appendix figures

Appendix figure 1. Turnover of service industries, trend series (TOL 2008).....	5
---	---

Revisions in these statistics.....	6
------------------------------------	---

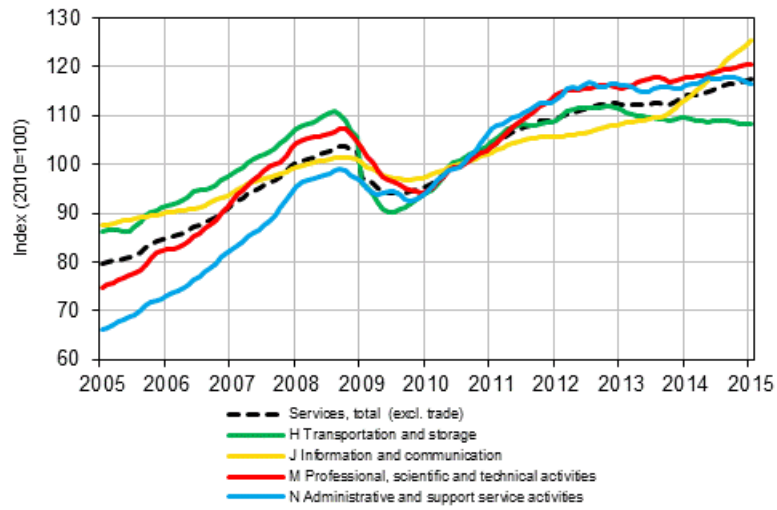
Appendix tables

Appendix table 1. Year-on-year change in turnover by industry, % (TOL 2008)

	Year-on-year change by three-month period, %				Year-on-year change in the latest month, %
	02-04/2014	05-07/2014	08-10/2014	11/14-01/15	01/2015
HIJLMNRS Other service activities total	1,6	2,5	3,8	3,4	2,4
H Transportation and storage	-1,1	-1,2	0,2	-1,2	-3,3
I Accommodation and food service activities	0,0	0,2	1,6	0,4	1,4
J Information and communication	5,2	8,1	12,8	9,7	9,7
L=68 Real estate activities	3,8	4,9	3,5	6,8	1,3
M Professional, scientific and technical activities	1,1	1,7	2,1	3,2	1,8
N Administrative and support services activities	0,3	2,5	2,4	1,5	0,4
R Arts, entertainment and recreation	4,9	4,3	4,2	4,5	11,2
S Other service activities	1,6	0,2	0,4	0,4	0,0

Appendix figures

Appendix figure 1. Turnover of service industries, trend series (TOL 2008)



Source: Statistics Finland

Revisions in these statistics

The data of the statistics have become revised according to the table below. For more information about data revisions, see Section 3 of the quality description (only in Finnish).

Revision of annual changes in turnover in main industries¹⁾

Industry / Reference period		Year-on-year change,%		Revision, percentage point
		1st release	Latest release (2015-04-15)	
HIJLMNRS Other service activities total	08/2014	3,1	2,4	-0,7
	09/2014	6,0	5,3	-0,7
	10/2014	4,4	3,8	-0,6
	11/2014	2,6	2,4	-0,2
	12/2014	5,6	5,2	-0,4
H Transportation and storage	08/2014	-2,6	-2,1	0,5
	09/2014	2,8	2,9	0,1
	10/2014	-0,9	-0,2	0,7
	11/2014	-4,1	-3,8	0,3
	12/2014	2,4	3,1	0,7
I Accommodation and food service activities	08/2014	2,8	2,2	-0,6
	09/2014	1,1	0,0	-1,1
	10/2014	3,7	2,6	-1,1
	11/2014	-1,7	-2,4	-0,7
	12/2014	4,7	2,5	-2,2
J Information and communication	08/2014	12,4	11,5	-0,9
	09/2014	15,1	14,5	-0,6
	10/2014	12,6	12,1	-0,5
	11/2014	8,1	7,4	-0,7
	12/2014	11,8	11,6	-0,2
L=68 Real estate activities	08/2014	5,5	4,8	-0,7
	09/2014	3,7	2,9	-0,8
	10/2014	5,0	2,9	-2,1
	11/2014	19,5	18,8	-0,7
	12/2014	4,1	2,3	-1,8
M Professional, scientific and technical activities	08/2014	0,5	-1,9	-2,4
	09/2014	6,5	4,7	-1,8
	10/2014	4,9	3,0	-1,9
	11/2014	3,6	3,0	-0,6
	12/2014	4,7	4,3	-0,4
N Administrative and support services activities	08/2014	2,7	0,8	-1,9
	09/2014	4,9	3,1	-1,8
	10/2014	4,0	3,1	-0,9
	11/2014	-1,3	0,0	1,3
	12/2014	4,7	3,9	-0,8
R Arts, entertainment and recreation	08/2014	7,4	7,0	-0,4
	09/2014	1,5	1,6	0,1
	10/2014	4,3	4,0	-0,3
	11/2014	-0,7	-2,0	-1,3
	12/2014	4,4	4,5	0,1

Industry / Reference period		Year-on-year change, %		Revision, percentage point
		1st release	Latest release (2015-04-15)	
S Other service activities	08/2014	-2,3	-1,4	0,9
	09/2014	4,7	3,2	-1,5
	10/2014	-0,2	-0,5	-0,3
	11/2014	-2,9	-2,8	0,1
	12/2014	4,7	3,5	-1,2

1) The 1st release refers to the time when data for the reference period were released for the first time. The revision describes the difference of annual change percentages between the first and latest release.

Revision of long-term annual changes in turnover in main industries

Industry	Year	Average ¹⁾	Average for absolute values ²⁾
HIJLMNRS Other service activities total	2011	-0,8	0,8
	2012	-0,8	0,8
	2013	-0,8	0,8
H Transportation and storage	2011	-0,4	0,5
	2012	-0,4	0,6
	2013	-0,5	0,5
I Accommodation and food service activities	2011	-0,5	0,5
	2012	-0,6	0,7
	2013	-0,8	0,8
J Information and communication	2011	-0,1	0,6
	2012	-0,7	0,7
	2013	-0,6	0,7
L=68 Real estate activities	2011	-0,9	1,1
	2012	-1,2	1,3
	2013	-1,3	1,3
M Professional, scientific and technical activities	2011	-3,0	3,0
	2012	-1,9	2,0
	2013	-1,7	1,7
N Administrative and support services activities	2011	-0,9	1,0
	2012	-0,6	0,7
	2013	-0,4	0,6
R Arts, entertainment and recreation	2011	-0,1	0,9
	2012	-0,1	0,5
	2013	-0,3	0,6
S Other service activities	2011	-1,5	1,9
	2012	-0,7	1,0
	2013	-1,3	2,3

1) Average for data revised between the first and seventh release in the statistical reference year.

2) Average for absolute values of differences between the first and seventh release.

Inquiries

Aki Niskanen 029 551 2657

Anna Muurainen 029 551 2670

Director in charge:

Hannele Orjala

palvelut.suhdanne@stat.fi

www.stat.fi

Source: Turnover of service industries, Statistics Finland