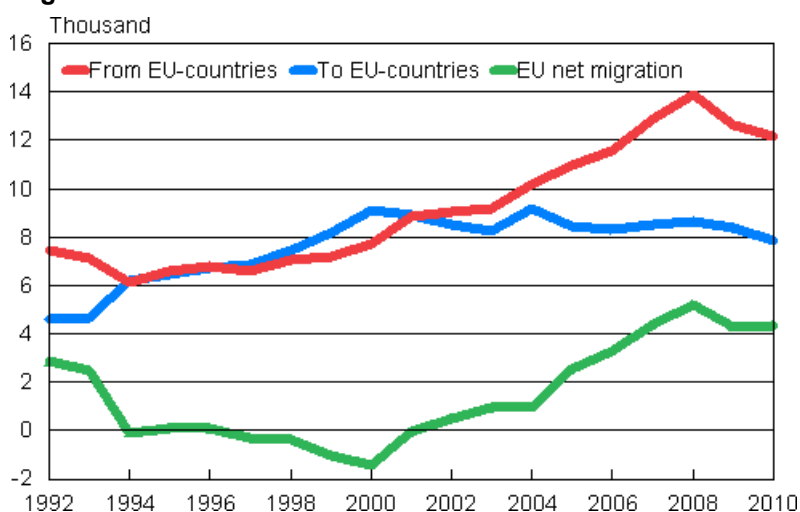


# Migration 2010

## Immigration lower than one year before

According to Statistics Finland, 25,650 persons immigrated to Finland from foreign countries during 2010. The number is 1,050 lower than one year before. Emigration from Finland also decreased slightly and was 11,900 persons. During 2010, net immigration totalled 13,750 persons, which is 800 down on the year before. Net immigration by foreign citizens contracted very little, or by 150 persons.

### Migration between Finland and other EU countries 1992–2010



Last year, 12,200 persons immigrated to Finland from the EU countries. Immigration from the EU countries was 450 persons down on the year before. Emigration from Finland to the EU countries contracted by 500 persons. The figure on emigration from Finland to the EU countries was the lowest in twelve years. In 2010, Finland had a migration gain of 4,350 persons from the EU countries. Finland's migration gain from the EU countries was fractionally up on the previous year.

In 2010, intermunicipal migrations numbered 270,688, which is 7,050 more than in 2009. The number of migrations between regions was 121,950 and increased by 4,400. Migrations inside regions increased by 2,650. When looking at migration inside the country, the region of Uusimaa had the largest migration gain (1,900 persons) and the region of Pirkanmaa the second largest (1,600 persons). Relative to population, migration gain was the highest (0.3%) in Kanta-Häme and Pirkanmaa. The highest numbers of population were lost in migration inside the country by the regions of Lapland (950) and Kainuu (600). Kainuu

suffered the largest migration loss relative to population (0.7%) and Lapland the second largest (0.5%). During 2010, intramunicipal migrations numbered 558,997, which is 2,600 (0.5%) down on 2009. Kainuu and Lapland suffered the largest migration losses relative to the size of the population.

### Migration 2000–2010

Year	Type				
	Intermunicipal	Intramunicipal migration	Immigration	Emigration	Net migration
2000	243,034	544,690	16,895	14,311	2,584
2001	263,989	594,609	18,955	13,153	5,802
2002	256,382	577,888	18,113	12,891	5,222
2003	255,502	593,589	17,838	12,083	5,755
2004	265,157	599,494	20,333	13,656	6,677
2005	274,642	614,507	21,355	12,369	8,986
2006	272,280	593,286	22,451	12,107	10,344
2007	278,907	589,363	26,029	12,443	13,586
2008	268,524	547,973	29,114	13,657	15,457
2009	263,646	571,617	26,699	12,151	14,548
2010	270,688	568,997	25,636	11,905	13,731

- The regional division in all years is the one valid on 1 January 2011.

# Contents

## Tables

### Appendix tables

Appendix table 1. Total net migration of urban regions and other municipalities in 2004–2010 .....	4
--	---

## Figures

### Appendix figures

Appendix figure 1. Immigration, emigration and net immigration in 1971–2010.....	5
--	---

Appendix figure 2. Intermunicipal migration by age 1987–2010, per mill.....	5
---	---

Appendix figure 3. Excess of births, net immigration and increase of population in 1971–2010.....	6
---	---

Quality description, migration 2010.....	7
--	---

## Appendix tables

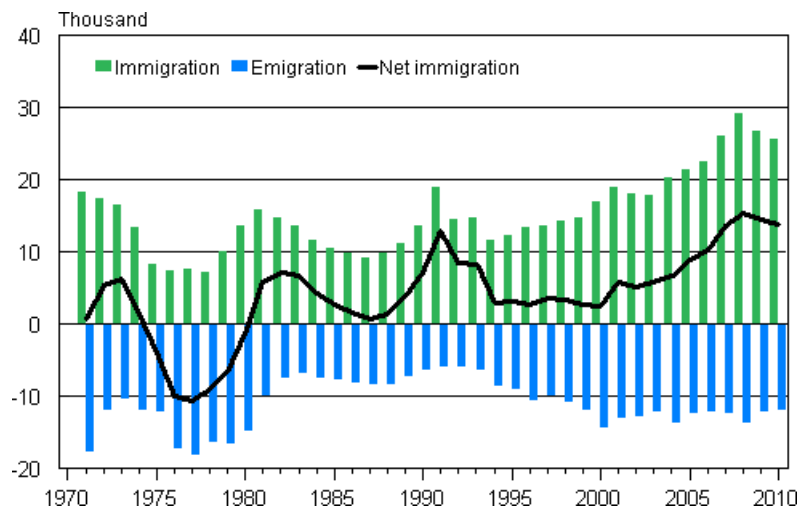
**Appendix table 1. Total net migration of urban regions and other municipalities in 2004–2010**

Year	Area		
	Whole country	Urban regions 1)	Other municipalities
2004	6,677	9,080	-2,403
2005	8,986	11,734	-2,748
2006	10,344	13,721	-3,377
2007	13,586	15,749	-2,163
2008	15,457	18,615	-3,158
2009	14,548	16,693	-2,145
2010	13,731	16,167	-2,436

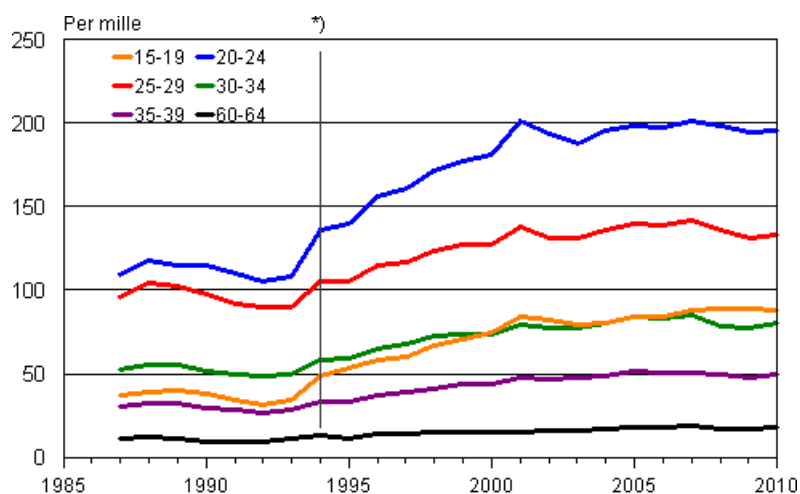
- 1) Urban municipalities and their satellite municipalities

## Appendix figures

**Appendix figure 1. Immigration, emigration and net immigration in 1971–2010**

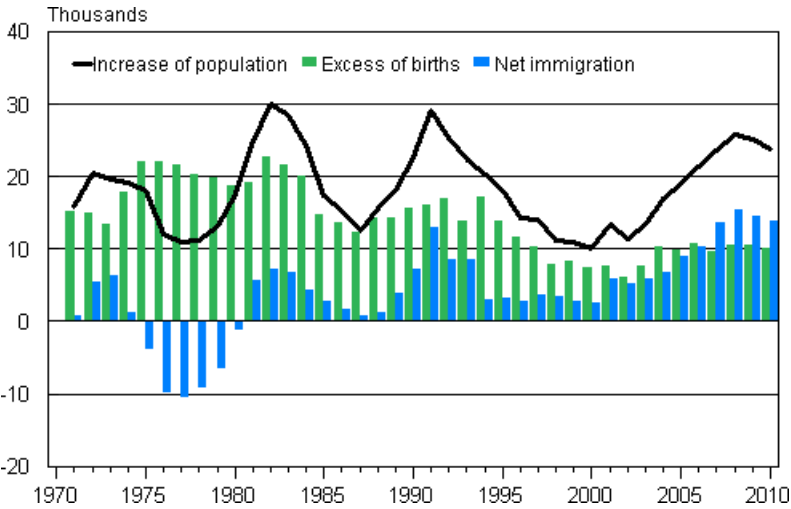


**Appendix figure 2. Intermunicipal migration by age 1987–2010, per mill**



\*) After the Act on the Municipality of Domicile (201/1994) taking effect students moving due to their studies have had the right to register themselves as permanent residents in the municipality in which they study. The regional division is 1.1.2011 in all years.

**Appendix figure 3. Excess of births, net immigration and increase of population in 1971–2010**



# Quality description, migration 2010

## 1. Relevance of statistical information

The main source used when producing Finnish population statistics is the Population Information System of the Population Register Centre. Changes in the data on the vital events of the resident population are updated into the Population Information System continuously by local population register authorities. From 1975 Statistics Finland has obtained population data from the Population Register Centre.

The last population registration was carried out in Finland on 1 January 1989. After that the Population Information System has been updated by notifications of changes. The data stored in the Population Information System are specified in the Population Information Act (11 June 1993/507).

Statistics Finland's function is to compile statistics on conditions in society (Statistics Finland Act of 24 January 1992/48). These also include demographic statistics. Statistics Finland's Rules of Procedure defines the Population Statistics unit as the producer of demographic statistics (Statistics Finland's Rules of Procedure, TK-00-1469-10).

In accordance with the Act on the Municipality of Domicile, the municipality of domicile and the place of residence of individuals are recorded in the Population Information System. The municipality in which a person lives or the one construed by the inhabitant as the municipality of domicile on the grounds of residence, family ties, livelihood or other equivalent circumstances, or to which the inhabitant has close links due to the aforementioned circumstances is deemed the municipality of domicile. (Act on the Municipality of Domicile, 201/1994.) The population registered in the Population Information System is divided into those present and those absent. Those present are permanent residents of Finland, either Finnish nationals or aliens. Those absent are Finnish nationals who when emigrating from the country have reported that they intend to be absent from Finland for more than one year, with the exception of Finnish nationals who are diplomats and those working in development co-operation (Act on the Municipality of Domicile, 201/1994.) Only changes in the population resident in Finland on 31 December are taken into account when compiling statistics on vital events. Persons moving to Finland from abroad are classified in the population statistics if the place of residence they have declared as their municipality of domicile is later confirmed as their place of residence.

### *Internal migration*

Those changing place of domicile are expected within one week of the move to report on the change of address, specifying all family members involved in the move. The notice is delivered to the register office of the new place of residence. The move is indicated as either a permanent or a temporary one, and once the register office receives the notice, the register office determines whether the nature of the move involves a permanent or temporary change of domicile. Since 1 June 1994, when the Act on the Municipality of Domicile (201/1994) came into effect, students moving due to their studies have had the right to register themselves as permanent residents in the municipality in which they study. Data on the change of dwelling and place of domicile are transferred in machine-language format to the Population Information System. The register office of the new place of residence sends the data on the new place of domicile to the register office of the former place of residence. (Population Data Act 507/1993 and amendment 202/1994; Act on the Municipality of Domicile 201/1994; Decree on the Municipality of Domicile 351/1994)

The effect of annexations has not been taken into account in the statistics on the volume of migration in the years of 1990-99 because combined figures for the annexed municipalities are given as the figures for the annexed municipality in the years prior to the year of annexation. The effect of the change in the statistical period is illustrated below in connection with the description of the intra-municipal migration concept.

The propensity for internal migration, or the rate of internal migration, refers to the number of migrants per 1,000 of the mean population in the area of departure. The propensity for internal migration indicates the migrants per 1,000 of the mean population in the age group in question.

### *Intramunicipal migration*

Statistics Finland receives information on the changes in place of residence that involve a permanent change of domicile. These changes in domicile are classified at Statistics Finland into intramunicipal moves and intermunicipal moves. Intramunicipal moves consist of moves from one dwelling to another within the same municipality, with moves from one building or house to another forming a separate sub-category. Intramunicipal statistics dating to 1986 and earlier cover only moves from one building or house to another within the same municipality.

Until 1993, the concept of intramunicipal migration consisted of moves from one household-dwelling unit to another within the same municipality. Since 1994, intramunicipal moves from institutional household-dwelling units to private household-dwelling units and vice versa have been included in the data. Moves from a situation where there is no permanent dwelling to private household-dwellings and vice versa have been classified as intramunicipal migration since 1994. This change in the concept has resulted in an increase of about 6 per cent in the intramunicipal migration data.

When the data for 1993 were produced, the statistical period was also changed from the period of 2 January to 1 January into 1 January to 31 December because of the corresponding change in the Population Information System. In the transition year the statistical period fell one day short of one year (the effect being 11,000 cases of intramunicipal migration and 4,500 cases of intermunicipal migration).

The coming into force of the Act on the Municipality of Domicile has somewhat increased the volume of intramunicipal and intermunicipal migration in 1994 and after that.

### *Immigration and emigration*

A Finnish citizen having entered the country must notify the register office if his/her intended stay in the country exceeds three months. The register office will update his/her data in the Population Information System (Act 661/2009). A foreign citizen may enter Finland provided he/she holds a required valid visa, residence permit or residence permit for an employed or self-employed person, unless he/she is an EU or EEA citizen or unless otherwise provided by an international agreement binding Finland (Aliens Act 301/2004). An EU or EEA citizen may stay in the country without a separate permit for three months, after which his/her stay in the country requires justifications and registration with the register office. The register office enters the reported information about the domicile of a foreign citizen into the Population Information System if the person receives a municipality of domicile and a permanent place of residence in it in Finland as defined in the Act on the Municipality of Domicile (201/1994). The length of employment or studying from entry into the country or the length of employment contract must be two years for a foreign citizen to receive the right to a place of domicile.

At a justified request, the information on a foreign citizen may also be entered after a short stay if he/she has, for example, a temporary place of residence in Finland as defined in the Act on the Municipality of Domicile and the entry is necessary for the realisation of rights related to employment or a similar circumstance (Act 661/2009). In statistics on population changes, a person's move into Finland from elsewhere is regarded as immigration only if a notation has been made into the Population Information System that he/she has received a permanent place of residence in Finland.

Persons emigrating from the country must submit a notice of change of address in the same way as persons who migrate within the country (Acts 661/2009, 201/1994). Persons who move to live abroad for more than one year are primarily regarded as emigrants. An exception to this are Finnish diplomats and persons working in development co-operation, etc. (Act on the Municipality of Domicile 201/1994). In accordance with an agreement between the Nordic countries, a period of residence of less than six months is not regarded as a move (Act on the Municipality of Domicile 201/1994, Decree and Treaty 96/2006).

When a person moves from one Nordic country to another, he/she must report his/her move to the local register authority of the country of entry, which will decide whether or not the person is registered as resident in the country of entry. The register authority of the country of entry informs the person concerned and the register authority of the country of exit about its decision. The date when the person has been entered into the local population register of the country of entry is recorded as the date of emigration in the population register of the country of exit (Act on the Municipality of Domicile 201/1994, Decree and International Treaty 96/2006).



## ***2. Methodological description of survey***

Each parish in the Evangelical-Lutheran and Greek Orthodox churches maintains a population register; in addition, the register office of each jurisdictional district maintains a register of the members of other religious bodies and of those with no religious affiliations. Data recorded in the population registers of the jurisdictional districts and parishes are transferred daily to Population Register Centre to be updated in the Population Information System. Statistics Finland receives the updated data on vital events in machine-language format on a weekly basis.

The deadline for delivering data to Statistics Finland on vital events in the statistical year is the end of January of the following year. The exception to this is the data on stillbirths, which were expected by the end of August. Data on population changes in statistical year delivered to Statistics Finland after this date are included in the data of the following year.

## ***3. Correctness and accuracy of data***

In general, the Population Information System of the Population Register Centre can be considered very exhaustive as regards persons. In order that a person obtains a personal identity code, he or she has to be registered in the Population Information System. It is practically impossible to live in Finland without a personal identity code. A personal identity code is needed so that one can work legally, open a bank account, have dealings with authorities and so on. It can be safely assumed that Finland cannot have any substantial numbers of 'moonlighters' who receive their pay in cash for periods of over one year, for example. Staying in Finland for at least one year is the prerequisite for registering into the population of Finland.

After abolishment of yearly checking of domicile registers (January 1) in 1989 the Population Information System has been maintained only by notifications of changes to population information. Their correctness is determined by a reliability survey made on the addresses in the Population Information System.

The Population Register Centre charges Statistics Finland with the task of conducting yearly a sample survey on correctness of address information. Around 11,000 people are asked whether their address in the Population Information System is correct. In the 2010 survey, the address was correct for 99.0 per cent of the respondents.

In connection with municipal elections, returned notifications of voting sent to foreigners usually reveal around 1,000 persons who have moved from the country without giving notice and are thus still included in the Finnish population. The Population Register Centre removes them from the resident population in the Population Information System before the following turn of the year.

## ***4. Timeliness and promptness of published data***

Final vital statistics are published yearly in May to June, except for those on stillbirths, which are released in September. Since 1999 the regional division used has been that of the first day of the following year. Thus the municipalities that unite on the first day of the new year are already combined in the statistics on the last day of the previous year. Information on the vital statistics of the united municipalities before the unification is available from 2003 onwards.

Preliminary statistics of population changes is released quarterly always at the end of the month following the previous quarter. Summary data of monthly population changes an population is released every month three weeks after the end the month. Preliminary population statistics by municipality are available by month. Monthly statistics of population changes is chargeable statistics and it is released monthly.

## ***5. Accessibility and transparency/clarity of data***

Basic population data are available in electronic form by municipality or with larger regional divisions than municipality in Statistics Finland's free Statistical Database on the internet.

[http://tilastokeskus.fi/tup/tilastotietokannat/index\\_en.html](http://tilastokeskus.fi/tup/tilastotietokannat/index_en.html)

The chargeable information service contains more specified information about the population by sub-area of municipality, for example.

The Altika statistical service also includes municipality-specific population data from 1975 onwards.

## ***6. Comparability of statistics***

Comparable regional vital statistics series are available free from 1987. The tables always indicate which regional division is used.

Vital statistics data on the numbers of births, deaths and marriages contracted are available from 1749 onwards. From 1773 there are data about mothers having given birth by five-year age group and from 1936 about all children born by age of mother. After the statistical revision of 1877 collection of data on deaths was started by one-year age group, which made it possible to begin calculation of accurate mortality and lifetime tables from the 1880s onwards. On account of this statistical revision, annual collection of data on migration and divorces was also started.

Compilation of statistics on immigrants based on lists of passports began in 1900 and continued until 1984. From 1945 there are data on the total volume of migration between Finland and foreign countries derived from statistical materials of other countries. The migration statistics between the Nordic Countries improved in 1969, when the so-called Inter-Nordic Migration Form was introduced. Production of statistics on migration outside the Nordic Countries improved further in 1985, when the obligation to notify was extended to emigrants.

Population data by municipality are available in electronic form in the Altika information service from 1975 onwards. The population time series in the free "Väestö" online service begin from the year 1980 or 1987. Vital statistics time series for the whole country is available from 1749.

## ***7. Coherence and consistency/uniformity***

Statistics Finland's other statistics use the data of demographic statistics as basic information on population. Consequently, Statistics Finland's other statistics correspond to demographic statistics.

### Inquiries

Matti Saari (09) 1734 3401

Director in charge:

Jari Tarkoma

[vaesto.tilasto@stat.fi](mailto:vaesto.tilasto@stat.fi)

[www.stat.fi](http://www.stat.fi)

Source: Population and Cause of Death Statistics. Statistics Finland